

For Research Use Only

# Rat IL-1RA/IL-1RN Recombinant antibody, PBS Only (Capture/Detector)

Catalog Number: 85672-3-PBS



## Basic Information

<b>Catalog Number:</b> 85672-3-PBS	<b>GenBank Accession Number:</b> NM_022194.2	<b>Purification Method:</b> Protein A purification
<b>Size:</b> 100ug, Concentration: 1 mg/ml by Nanodrop;	<b>GeneID (NCBI):</b> 60582	<b>CloneNo.:</b> 242317D2
<b>Source:</b> Rabbit	<b>UNIPROT ID:</b> P25086	
<b>Isotype:</b> IgG	<b>Full Name:</b> interleukin 1 receptor antagonist	
<b>Immunogen Catalog Number:</b> EG3206	<b>Calculated MW:</b> 20 kDa	
	<b>Observed MW:</b> 18-20 kDa	

## Applications

**Tested Applications:**  
WB, IHC, Cytometric bead array, Indirect ELISA

**Species Specificity:**  
human, mouse, rat

## Product Information

85672-3-PBS targets IL-1RA/IL-1RN as part of a matched antibody pair:

MP02044-1: 85672-1-PBS capture and 85672-3-PBS detection (validated in Cytometric bead array)

MP02044-2: 85672-3-PBS capture and 85672-2-PBS detection (validated in Cytometric bead array)

Unconjugated rabbit recombinant monoclonal antibody in PBS only (BSA and azide free) storage buffer at a concentration of 1 mg/mL, ready for conjugation. Created using Proteintech's proprietary in-house recombinant technology. Recombinant production enables unrivalled batch-to-batch consistency, easy scale-up, and future security of supply.

This conjugation ready format makes antibodies ideal for use in many applications including: ELISAs, multiplex assays requiring matched pairs, mass cytometry, and multiplex imaging applications. Antibody use should be optimized by the end user for each application and assay.

## Background Information

Interleukin-1 receptor antagonist (IL-1RA) is a critical member of the IL-1 family of cytokines, which plays a significant role in modulating inflammatory responses. IL-1RA exists in two main forms: a secreted form (sIL-1Ra) and an intracellular form (icIL-1Ra). The secreted form is produced by various cells including monocytes, macrophages, neutrophils, and other cells, while the intracellular form is found in keratinocytes and other epithelial cells, as well as in monocytes and fibroblasts. IL-1RA is important in host defense against endotoxin-induced injury and is produced in numerous experimental animal models of disease, as well as in human autoimmune and chronic inflammatory diseases. It acts as an anti-inflammatory agent by maintaining the balance between pro-inflammatory IL-1 $\alpha$ / $\beta$  and its own anti-inflammatory effects.

## Storage

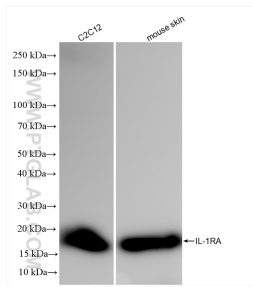
**Storage:**  
Store at -80°C.

**Storage Buffer:**  
PBS only, pH7.3

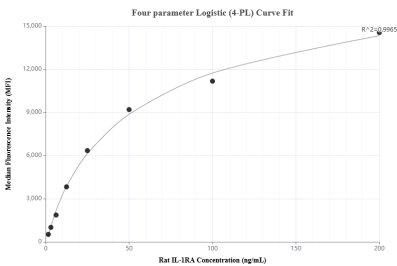
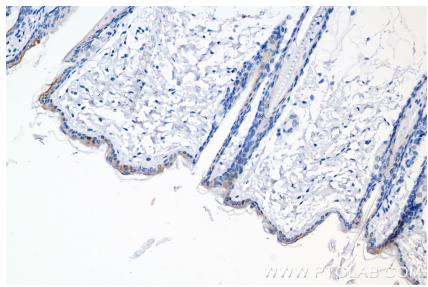
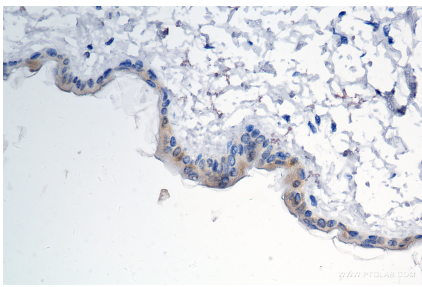
For technical support and original validation data for this product please contact:  
T: 1 (888) 4PTGLAB (1-888-478-4522) (toll free in USA), or 1(312) 455-8498 (outside USA)  
E: [proteintech@ptglab.com](mailto:proteintech@ptglab.com)  
W: [ptglab.com](http://ptglab.com)

This product is exclusively available under Proteintech Group brand and is not available to purchase from any other manufacturer.

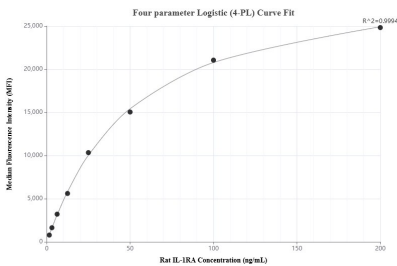
Selected Validation Data



Various lysates were subjected to SDS PAGE followed by western blot with 85672-3-RR (IL-1RA/IL-1RN antibody) at dilution of 1:1000 incubated at room temperature for 1.5 hours. This data was developed using the same antibody clone with 85672-3-PBS in a different storage buffer formulation.



Cytometric bead array standard curve of MP02044-2, RAT IL-1RA Recombinant Matched Antibody Pair, PBS Only. Capture antibody: 85672-3-PBS. Detection antibody: 85672-2-PBS. Standard: Eg3206. Range: 1.563-200 ng/mL.



Cytometric bead array standard curve of MP02044-1, RAT IL-1RA Recombinant Matched Antibody Pair, PBS Only. Capture antibody: 85672-1-PBS. Detection antibody: 85672-3-PBS. Standard: Eg3206. Range: 1.563-200 ng/mL.