

For Research Use Only

Rat Osteopontin Recombinant antibody, PBS Only (Capture)

Catalog Number: 85673-3-PBS



Basic Information

Catalog Number: 85673-3-PBS	GenBank Accession Number: NM_012881.2	Purification Method: Protein A purification
Size: 100ug , Concentration: 1 mg/ml by Nanodrop;	GeneID (NCBI): 25353	CloneNo.: 242654C9
Source: Rabbit	UNIPROT ID: P08721	
Isotype: IgG	Full Name: secreted phosphoprotein 1	
Immunogen Catalog Number: EG3247	Calculated MW: 35 kDa	

Applications

Tested Applications:
Cytometric bead array, Sandwich ELISA, Indirect ELISA, Sample test

Species Specificity:
rat

Product Information

85673-3-PBS targets Osteopontin as part of a matched antibody pair:

MP02043-1: 85673-3-PBS capture and 85673-2-PBS detection (validated in Cytometric bead array)

MP02043-2: 85673-3-PBS capture and 85673-1-PBS detection (validated in Cytometric bead array)

MP02043-3: 85673-3-PBS capture and 85673-4-PBS detection (validated in Sandwich ELISA)

Unconjugated rabbit recombinant monoclonal antibody in PBS only (BSA and azide free) storage buffer at a concentration of 1 mg/mL, ready for conjugation. Created using Proteintech's proprietary in-house recombinant technology. Recombinant production enables unrivalled batch-to-batch consistency, easy scale-up, and future security of supply.

This conjugation ready format makes antibodies ideal for use in many applications including: ELISAs, multiplex assays requiring matched pairs, mass cytometry, and multiplex imaging applications. Antibody use should be optimized by the end user for each application and assay.

Storage

Storage:
Store at -80°C.

Storage Buffer:
PBS only, pH7.3

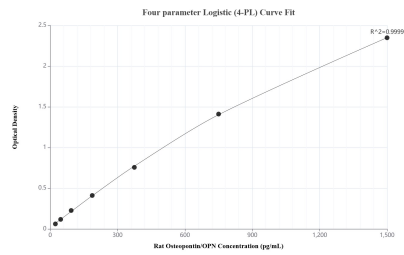
For technical support and original validation data for this product please contact:

T: 1 (888) 4PTGLAB (1-888-478-4522) (toll free in USA), or 1(312) 455-8498 (outside USA)

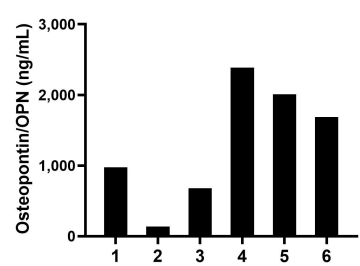
E: proteintech@ptglab.com
W: ptglab.com

This product is exclusively available under Proteintech Group brand and is not available to purchase from any other manufacturer.

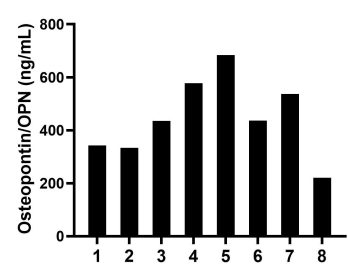
Selected Validation Data



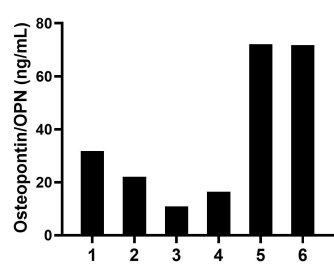
Sandwich ELISA standard curve of MP02043-3, Rat Osteopontin/OPN Recombinant Matched Antibody Pair - PBS only. 85673-3-PBS was coated to a plate as the capture antibody and incubated with serial dilutions of standard Eg3247. 85673-4-PBS was HRP conjugated as the detection antibody. Range: 23.4-1500 pg/mL



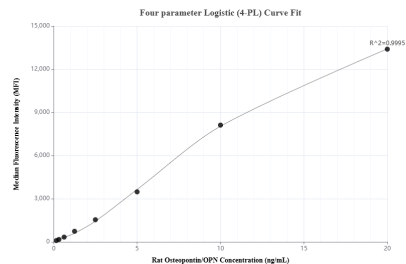
Urine of six mice was measured. The Osteopontin/OPN concentration of detected samples was determined to be 1,311.5 ng/mL with a range of 137.8-2,384.1 ng/mL



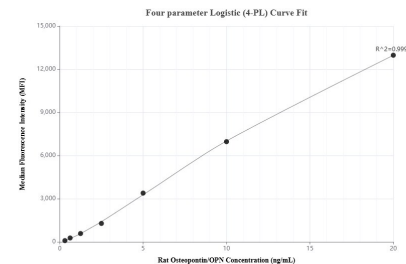
Serum of eight rats was measured. The Osteopontin/OPN concentration of detected samples was determined to be 445.8 ng/mL with a range of 220.2-683.6 ng/mL



Serum of six mice was measured. The Osteopontin/OPN concentration of detected samples was determined to be 37.5 ng/mL with a range of 10.9-72.1 ng/mL



Cytometric bead array standard curve of MP02043-1, RAT Osteopontin/OPN Recombinant Matched Antibody Pair, PBS Only. Capture antibody: 85673-3-PBS. Detection antibody: 85673-2-PBS. Standard: Eg3247. Range: 0.156-20 ng/mL



Cytometric bead array standard curve of MP02043-2, RAT Osteopontin/OPN Recombinant Matched Antibody Pair, PBS Only. Capture antibody: 85673-3-PBS. Detection antibody: 85673-1-PBS. Standard: Eg3247. Range: 0.313-20 ng/mL