

For Research Use Only

# RBM24 Recombinant antibody, PBS Only

Catalog Number: 85674-1-PBS



## Basic Information

<b>Catalog Number:</b> 85674-1-PBS	<b>GenBank Accession Number:</b> BC104808	<b>Purification Method:</b> Protein A purification
<b>Size:</b> 100ug , Concentration: 1 mg/ml by Nanodrop;	<b>GeneID (NCBI):</b> 221662	<b>CloneNo.:</b> 243006A11
<b>Source:</b> Rabbit	<b>UNIPROT ID:</b> Q9BX46	
<b>Isotype:</b> IgG	<b>Full Name:</b> RNA binding motif protein 24	
<b>Immunogen Catalog Number:</b> AG12871	<b>Calculated MW:</b> 191 aa, 20 kDa	
	<b>Observed MW:</b> 20 kDa	

## Applications

**Tested Applications:**  
WB, Indirect ELISA

**Species Specificity:**  
human, mouse

## Background Information

RNA-binding proteins have a pivotal role in post-transcriptionally regulating gene expression. During early development, they exhibit temporally and spatially regulated expression patterns and affect the proteome of a single cell by controlling alternative splicing, transport, localization, and stability of their target RNAs (PMID: 22510371). Their expression is tissue-specific, and their crucial influence on the protein setup, especially in muscle cells, has become recognized recently (PMID: 21982546). RBM24 is one RNA-binding protein that is fundamental in regulating cardiac gene expression, sarcomeric assembly, and cardiac contractility. It may thus represent a novel pathway to cardiomyopathy (PMID: 20338237).

## Storage

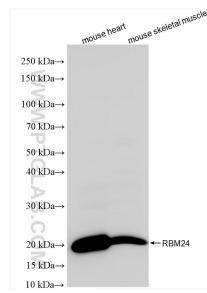
**Storage:**  
Store at -80°C.

**Storage Buffer:**  
PBS only

For technical support and original validation data for this product please contact:  
T: 1 (888) 4PTGLAB (1-888-478-4522) (toll free in USA), or 1(312) 455-8498 (outside USA)  
E: [proteintech@ptglab.com](mailto:proteintech@ptglab.com)  
W: [ptglab.com](http://ptglab.com)

This product is exclusively available under Proteintech Group brand and is not available to purchase from any other manufacturer.

## Selected Validation Data



Various lysates were subjected to SDS PAGE followed by western blot with 85674-1-RR (RBM24 antibody) at dilution of 1:5000 incubated at room temperature for 1.5 hours. This data was developed using the same antibody clone with 85674-1-PBS in a different storage buffer formulation.