

For Research Use Only

# RBM24 Recombinant antibody

Catalog Number: 85674-1-RR



## Basic Information

<b>Catalog Number:</b> 85674-1-RR	<b>GenBank Accession Number:</b> BC104808	<b>Purification Method:</b> Protein A purification
<b>Size:</b> 100ul , Concentration: 1000 µg/ml by Nanodrop;	<b>GeneID (NCBI):</b> 221662	<b>CloneNo.:</b> 243006A11
<b>Source:</b> Rabbit	<b>UNIPROT ID:</b> Q9BX46	<b>Recommended Dilutions:</b> WB 1:2000-1:10000
<b>Isotype:</b> IgG	<b>Full Name:</b> RNA binding motif protein 24	
<b>Immunogen Catalog Number:</b> AG12871	<b>Calculated MW:</b> 191 aa, 20 kDa	
	<b>Observed MW:</b> 20 kDa	

## Applications

<b>Tested Applications:</b> WB, ELISA	<b>Positive Controls:</b> WB : mouse heart tissue, mouse skeletal muscle tissue
<b>Species Specificity:</b> human, mouse	

## Background Information

RNA-binding proteins have a pivotal role in post-transcriptionally regulating gene expression. During early development, they exhibit temporally and spatially regulated expression patterns and affect the proteome of a single cell by controlling alternative splicing, transport, localization, and stability of their target RNAs (PMID: 22510371). Their expression is tissue-specific, and their crucial influence on the protein setup, especially in muscle cells, has become recognized recently (PMID: 21982546). RBM24 is one RNA-binding protein that is fundamental in regulating cardiac gene expression, sarcomeric assembly, and cardiac contractility. It may thus represent a novel pathway to cardiomyopathy (PMID: 20338237).

## Storage

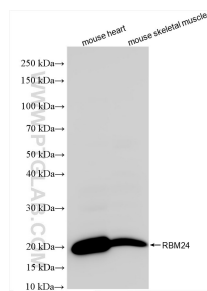
**Storage:**  
Store at -20°C. Stable for one year after shipment.  
**Storage Buffer:**  
PBS with 0.02% sodium azide and 50% glycerol  
Aliquoting is unnecessary for -20°C storage

\*\*\* 20ul sizes contain 0.1% BSA

For technical support and original validation data for this product please contact:  
T: 1 (888) 4PTGLAB (1-888-478-4522) (toll free in USA), or 1(312) 455-8498 (outside USA)  
E: [proteintech@ptglab.com](mailto:proteintech@ptglab.com)  
W: [ptglab.com](http://ptglab.com)

This product is exclusively available under Proteintech Group brand and is not available to purchase from any other manufacturer.

## Selected Validation Data



Various lysates were subjected to SDS PAGE followed by western blot with 85674-1-RR (RBM24 antibody) at dilution of 1:5000 incubated at room temperature for 1.5 hours.