

For Research Use Only

KIF23 Recombinant antibody, PBS Only (Capture)

Catalog Number: 85675-5-PBS



Basic Information

Catalog Number: 85675-5-PBS	GenBank Accession Number: NM_138555	Purification Method: Protein A purification
Size: 100ug , Concentration: 1 mg/ml by Nanodrop;	GeneID (NCBI): 9493	CloneNo.: 243084E3
Source: Rabbit	UNIPROT ID: Q02241	
Isotype: IgG	Full Name: kinesin family member 23	
Immunogen Catalog Number: AG29346	Calculated MW: 110 kDa	

Applications

Tested Applications:
IF/ICC, Cytometric bead array, Indirect ELISA

Species Specificity:
human

Product Information

85675-5-PBS targets KIF23 as part of a matched antibody pair:

MP02031-1: 85675-5-PBS capture and 85675-4-PBS detection (validated in Cytometric bead array)

MP02031-2: 85675-5-PBS capture and 85675-3-PBS detection (validated in Cytometric bead array)

Unconjugated rabbit recombinant monoclonal antibody in PBS only (BSA and azide free) storage buffer at a concentration of 1 mg/mL, ready for conjugation. Created using Proteintech's proprietary in-house recombinant technology. Recombinant production enables unrivalled batch-to-batch consistency, easy scale-up, and future security of supply.

This conjugation ready format makes antibodies ideal for use in many applications including: ELISAs, multiplex assays requiring matched pairs, mass cytometry, and multiplex imaging applications. Antibody use should be optimized by the end user for each application and assay.

Background Information

KIF23, also known as KNSL5 and MKLP1, is a member of the kinesin-like protein family. It plays a crucial role in cytokinesis, the final stage of cell division. It is involved in the formation of the central spindle, which is essential for the proper separation of the cytoplasm and the formation of the cleavage furrow. KIF23 is also involved in the organization and transport of intracellular vesicles and organelles. Mutations in KIF23 have been associated with congenital dyserythropoietic anemia type III (PMID: 23570799).

Storage

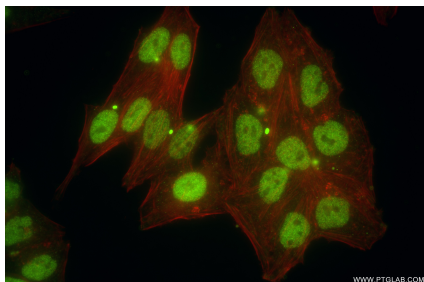
Storage:
Store at -80°C.

Storage Buffer:
PBS only, pH7.3

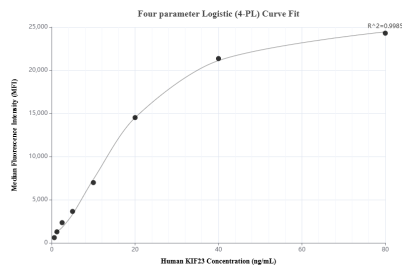
For technical support and original validation data for this product please contact:
T: 1 (888) 4PTGLAB (1-888-478-4522) (toll free in USA), or 1(312) 455-8498 (outside USA)
E: proteintech@ptglab.com
W: ptglab.com

This product is exclusively available under Proteintech Group brand and is not available to purchase from any other manufacturer.

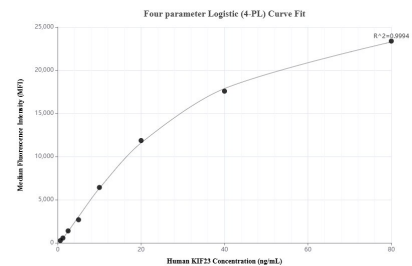
Selected Validation Data



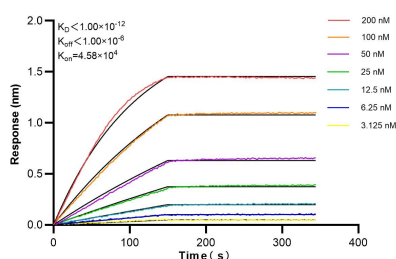
Immunofluorescent analysis of (4% PFA) fixed HepG2 cells using KIF23 antibody (85675-5-RR, Clone: 243084E3) at dilution of 1:1000 and CoraLite@488-Conjugated Goat Anti-Rabbit IgG(H+L) (SA00013-2), CL594-Phalloidin (red). This data was developed using the same antibody clone with 85675-5-PBS in a different storage buffer formulation.



Cytometric bead array standard curve of MP02031-1, KIF23 Recombinant Matched Antibody Pair, PBS Only. Capture antibody: 85675-5-PBS. Detection antibody: 85675-4-PBS. Standard: Ag29346. Range: 0.625-80 ng/mL.



Cytometric bead array standard curve of MP02031-2, KIF23 Recombinant Matched Antibody Pair, PBS Only. Capture antibody: 85675-5-PBS. Detection antibody: 85675-3-PBS. Standard: Ag29346. Range: 0.625-80 ng/mL.



Biolayer interferometry (BLI) kinetic assays of 85675-5-RR against Human KIF23 were performed. The affinity constant is below 1 pM.