

For Research Use Only

KIF23 Recombinant antibody

Catalog Number: 85675-5-RR



Basic Information

Catalog Number: 85675-5-RR	GenBank Accession Number: NM_138555	Purification Method: Protein A purification
Size: 100ul , Concentration: 1000 µg/ml by Nanodrop;	GeneID (NCBI): 9493	CloneNo.: 243084E3
Source: Rabbit	UNIPROT ID: Q02241	Recommended Dilutions: IF/ICC 1:500-1:2000
Isotype: IgG	Full Name: kinesin family member 23	
Immunogen Catalog Number: AG29346	Calculated MW: 110 kDa	

Applications

Tested Applications: IF/ICC, ELISA	Positive Controls: IF/ICC : HepG2 cells,
Species Specificity: human	

Background Information

KIF23, also known as KNSL5 and MKLP1, is a member of the kinesin-like protein family. It plays a crucial role in cytokinesis, the final stage of cell division. It is involved in the formation of the central spindle, which is essential for the proper separation of the cytoplasm and the formation of the cleavage furrow. KIF23 is also involved in the organization and transport of intracellular vesicles and organelles. Mutations in KIF23 have been associated with congenital dyserythropoietic anemia type III (PMID: 23570799).

Storage

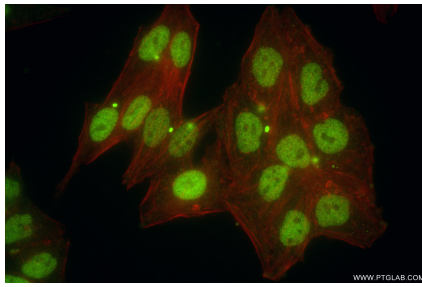
Storage:
Store at -20°C. Stable for one year after shipment.
Storage Buffer:
PBS with 0.02% sodium azide and 50% glycerol pH 7.3.
Aliquoting is unnecessary for -20°C storage

*** 20ul sizes contain 0.1% BSA

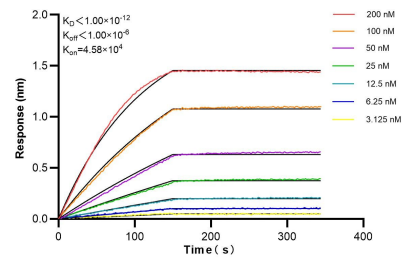
For technical support and original validation data for this product please contact:
T: 1 (888) 4PTGLAB (1-888-478-4522) (toll free in USA), or 1(312) 455-8498 (outside USA)
E: proteintech@ptglab.com
W: ptglab.com

This product is exclusively available under Proteintech Group brand and is not available to purchase from any other manufacturer.

Selected Validation Data



Immunofluorescent analysis of (4% PFA) fixed HepG2 cells using KIF23 antibody (85675-5-RR, Clone: 243084E3) at dilution of 1:1000 and CoraLite®488-Conjugated Goat Anti-Rabbit IgG(H+L) (SA00013-2), CLS94-Phalloidin (red).



Biolayer interferometry (BLI) kinetic assays of 85675-5-RR against Human KIF23 were performed. The affinity constant is below 1 pM.