

For Research Use Only

# METTL5 Recombinant antibody, PBS Only

Catalog Number: 85682-5-PBS



## Basic Information

<b>Catalog Number:</b> 85682-5-PBS	<b>GenBank Accession Number:</b> BC000921	<b>Purification Method:</b> Protein A purification
<b>Size:</b> 100ug, Concentration: 1 mg/ml by Nanodrop;	<b>GeneID (NCBI):</b> 29081	<b>CloneNo.:</b> 243081C8
<b>Source:</b> Rabbit	<b>UNIPROT ID:</b> Q9NRN9	
<b>Isotype:</b> IgG	<b>Full Name:</b> methyltransferase like 5	
<b>Immunogen Catalog Number:</b> AG10214	<b>Calculated MW:</b> 209 aa, 24 kDa	
	<b>Observed MW:</b> 24-27 kDa	

## Applications

**Tested Applications:**  
WB, Indirect ELISA  
**Species Specificity:**  
human

## Background Information

METTL5 is a member of the METTL family of S-adenosyl-methionine-dependent methyltransferases that adds m6A to a specific site, nucleotide A-1832 of 18S rRNA, hereafter referred to as m6A1832. METTL5 is localized in the nucleolus and cytoplasm.

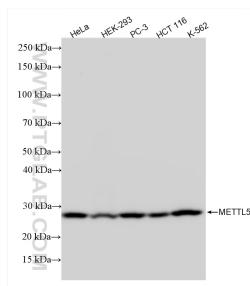
## Storage

**Storage:**  
Store at -80°C.  
**Storage Buffer:**  
PBS only, pH7.3

For technical support and original validation data for this product please contact:  
T: 1 (888) 4PTGLAB (1-888-478-4522) (toll free in USA), or 1(312) 455-8498 (outside USA)  
E: [proteintech@ptglab.com](mailto:proteintech@ptglab.com)  
W: [ptglab.com](http://ptglab.com)

This product is exclusively available under Proteintech Group brand and is not available to purchase from any other manufacturer.

## Selected Validation Data



Various lysates were subjected to SDS PAGE followed by western blot with 85682-5-RR (METTL5 antibody) at dilution of 1:5000 incubated at room temperature for 1.5 hours. This data was developed using the same antibody clone with 85682-5-PBS in a different storage buffer formulation.