

For Research Use Only

METTL5 Recombinant antibody

Catalog Number: 85682-5-RR



Basic Information

Catalog Number:

85682-5-RR

Size:

100ul, Concentration: 1000 µg/ml by
Nanodrop;

Source:

Rabbit

Isotype:

IgG

Immunogen Catalog Number:

AG10214

GenBank Accession Number:

BC000921

GeneID (NCBI):

29081

UNIPROT ID:

Q9NRN9

Full Name:

methyltransferase like 5

Calculated MW:

209 aa, 24 kDa

Observed MW:

24-27 kDa

Purification Method:

Protein A purification

CloneNo.:

243081C8

Recommended Dilutions:

WB 1:2000-1:10000

Applications

Tested Applications:

WB, ELISA

Species Specificity:

human

Positive Controls:

WB : HeLa cells, HEK-293 cells, PC-3 cells, HCT 116
cells, K-562 cells

Background Information

METTL5 is a member of the METTL family of S-adenosyl-methionine-dependent methyltransferases that adds m6A to a specific site, nucleotide A-1832 of 18S rRNA, hereafter referred to as m6A1832. METTL5 is localized in the nucleolus and cytoplasm.

Storage

Storage:

Store at -20°C. Stable for one year after shipment.

Storage Buffer:

PBS with 0.02% sodium azide and 50% glycerol, pH7.3

Aliquoting is unnecessary for -20°C storage

*** 20ul sizes contain 0.1% BSA

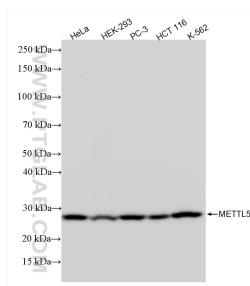
For technical support and original validation data for this product please contact:

T: 1 (888) 4PTGLAB (1-888-478-4522) (toll free
in USA), or 1(312) 455-8498 (outside USA)

E: proteintech@ptglab.com
W: ptglab.com

This product is exclusively available under Proteintech Group brand and is not available to purchase from any other manufacturer.

Selected Validation Data



Various lysates were subjected to SDS PAGE followed by western blot with 85682-5-RR (METTL5 antibody) at dilution of 1:5000 incubated at room temperature for 1.5 hours.