

For Research Use Only

SERPINE1 Recombinant antibody

Catalog Number: 85683-6-RR



Basic Information

Catalog Number:

85683-6-RR

Size:

100ul, Concentration: 1000 µg/ml by

Nanodrop;

Source:

Rabbit

Isotype:

IgG

Immunogen Catalog Number:

EG3798

GenBank Accession Number:

BC010860

GeneID (NCBI):

5054

UNIPROT ID:

P05121

Full Name:

serpin peptidase inhibitor, clade E

(nexin, plasminogen activator

inhibitor type 1), member 1

Calculated MW:

402 aa, 45 kDa

Observed MW:

45 kDa

Purification Method:

Protein A purification

CloneNo.:

243115E1

Recommended Dilutions:

WB 1:1000-1:4000

Applications

Tested Applications:

WB, ELISA

Species Specificity:

human

Positive Controls:

WB : HepG2 cells, HuH-7 cells, L02 cells, U2OS cells

Background Information

SERPINE1, also named as Plasminogen activator inhibitor type 1 (PAI-1), is a member of the serine protease inhibitor (SERPIN) superfamily. PAI-1 is the principal inhibitor of tPA and uPA, and hence is an inhibitor of fibrinolysis. Defects in this gene are the cause of plasminogen activator inhibitor-1 deficiency (PAI-1 deficiency), and high concentrations of the gene product are associated with thrombophilia.

Storage

Storage:

Store at -20°C. Stable for one year after shipment.

Storage Buffer:

PBS with 0.02% sodium azide and 50% glycerol, pH7.3

Aliquoting is unnecessary for -20°C storage

*** 20ul sizes contain 0.1% BSA

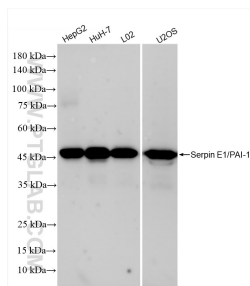
For technical support and original validation data for this product please contact:

T: 1 (888) 4PTGLAB (1-888-478-4522) (toll free
in USA), or 1(312) 455-8498 (outside USA)

E: proteintech@ptglab.com
W: ptglab.com

This product is exclusively available under Proteintech Group brand and is not available to purchase from any other manufacturer.

Selected Validation Data



Various lysates were subjected to SDS PAGE followed by western blot with 85683-6-RR (SERPINE1 antibody) at dilution of 1:2000 incubated at room temperature for 1.5 hours.