

For Research Use Only

SPINT2/HAI-2 Recombinant monoclonal antibody, PBS Only

Catalog Number: 85684-6-PBS



Basic Information

Catalog Number: 85684-6-PBS	GenBank Accession Number: NM_021102.3	Purification Method: Protein A purification
Size: 100ug , Concentration: 1 mg/ml by Nanodrop;	GeneID (NCBI): 10653	CloneNo.: 243094E5
Source: Rabbit	UNIPROT ID: O43291-1	
Isotype: IgG	Full Name: serine peptidase inhibitor, Kunitz type, 2	
Immunogen Catalog Number: EG3130	Calculated MW: 28 kDa	
	Observed MW: 28-34 kDa	

Applications

Tested Applications:
WB, Indirect ELISA

Species Specificity:
human

Background Information

Serine peptidase inhibitor Kunitz type 2 (SPINT2) is a serine protease inhibitor Kunitz type 2, also known as hepatocyte growth factor (HGF) activator (HGFA) inhibitor type 2 (HAI-2). It displays inhibitory activity in membrane serine proteases, such as matriptase and hepsin, as well as secreted proteases such as HGFA and plasmin (PMID: 9771903, PMID: 15792801). SPINT2 is a tumor suppressor gene that inhibits proteases implicated in cancer progression, like HGFA, hepsin and matriptase (PMID: 30168196). SPINT2 regulates cell proliferation, migration and invasion via a reduction in HGFA, leading to apoptosis and necrosis of uterine leiomyosarcoma cells (PMID: 20664929). This target may exhibit a molecular weight of approximately 28-34 kDa due to glycosylation modification.

Storage

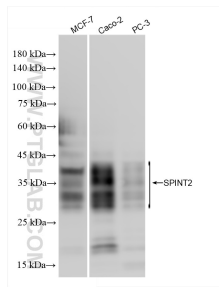
Storage:
Store at -80°C.

Storage Buffer:
PBS only, pH7.3

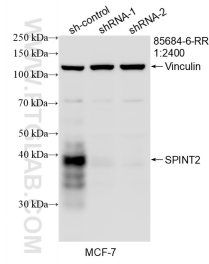
For technical support and original validation data for this product please contact:
T: 1 (888) 4PTGLAB (1-888-478-4522) (toll free in USA), or 1(312) 455-8498 (outside USA) E: proteintech@ptglab.com
W: ptglab.com

This product is exclusively available under Proteintech Group brand and is not available to purchase from any other manufacturer.

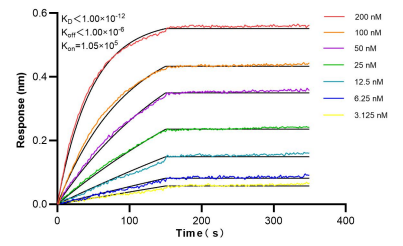
Selected Validation Data



Various lysates were subjected to SDS PAGE followed by western blot with 85684-6-RR (SPINT2 antibody) at dilution of 1:10000 incubated at room temperature for 1.5 hours. This data was developed using the same antibody clone with 85684-6-PBS in a different storage buffer formulation.



WB result of SPINT2/HAI-2 antibody (85684-6-RR; 1:2400; incubated at room temperature for 1.5 hours) with sh-Control and sh-SPINT2/HAI-2 transfected MCF-7 cells. This data was developed using the same antibody clone with 85684-6-PBS in a different storage buffer formulation.



Bi-layer interferometry (BLI) kinetic assays of 85684-6-RR against Human SPINT2/HAI-2 were performed. The affinity constant is below 1 pM.