

For Research Use Only

RPL10A Recombinant antibody

Catalog Number: 85685-1-RR



Basic Information

Catalog Number:

85685-1-RR

Size:

100ul , Concentration: 1000 µg/ml by Nanodrop;

Source:

Rabbit

Isotype:

IgG

Immunogen Catalog Number:

AG10009

GenBank Accession Number:

BC006791

GeneID (NCBI):

4736

UNIPROT ID:

P62906

Full Name:

ribosomal protein L10a

Calculated MW:

25 kDa

Observed MW:

25 kDa

Purification Method:

Protein A purification

CloneNo.:

243031C10

Recommended Dilutions:

WB 1:5000-1:50000

IF/ICC 1:200-1:800

Applications

Tested Applications:

WB, IF/ICC, ELISA

Species Specificity:

human, mouse, rat

Positive Controls:

WB : K-562 cells, Jurkat cells, HepG2 cells, HeLa cells, mouse spleen tissue, rat spleen tissue, fetal human brain tissue

IF/ICC : HepG2 cells,

Background Information

RPL10A (Ribosomal Protein L10a) is a component of the 60S subunit of the ribosome and belongs to the L1P family of ribosomal proteins. It is located in the cytoplasm. RPL10A is ubiquitously expressed in various tissues, it plays a crucial role in ribosome biogenesis and protein synthesis. In addition to its role in protein synthesis, RPL10A has been implicated in cell proliferation, embryogenesis, and organogenesis. PMID: 29953919

Storage

Storage:

Store at -20°C. Stable for one year after shipment.

Storage Buffer:

PBS with 0.02% sodium azide and 50% glycerol pH 7.3.

Aliquoting is unnecessary for -20°C storage

*** 20ul sizes contain 0.1% BSA

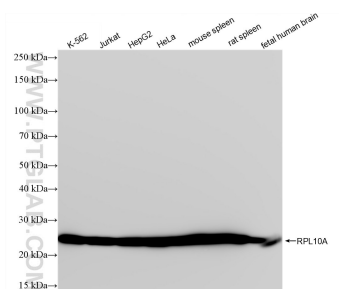
For technical support and original validation data for this product please contact:

T: 1 (888) 4PTGLAB (1-888-478-4522) (toll free in USA), or 1(312) 455-8498 (outside USA)

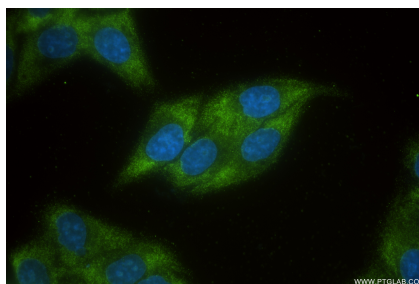
E: proteintech@ptglab.com
W: ptglab.com

This product is exclusively available under Proteintech Group brand and is not available to purchase from any other manufacturer.

Selected Validation Data



Various lysates were subjected to SDS PAGE followed by western blot with 85685-1-RR (RPL10A antibody) at dilution of 1:10000 incubated at room temperature for 1.5 hours.



Immunofluorescent analysis of (-20°C Ethanol) fixed HepG2 cells using RPL10A antibody (85685-1-RR, Clone: 243031C10) at dilution of 1:400 and CoraLite® 488-Conjugated Goat Anti-Rabbit IgG(H+L) (SA00013-2).