

For Research Use Only

HOMER1 Recombinant antibody, PBS Only (Capture)

Catalog Number: 85692-6-PBS



Basic Information

Catalog Number: 85692-6-PBS	GenBank Accession Number: BC015502	Purification Method: Protein A purification
Size: 100ug, Concentration: 1 mg/ml by Nanodrop;	GeneID (NCBI): 9456	CloneNo.: 243007E1
Source: Rabbit	UNIPROT ID: Q86YM7	
Isotype: IgG	Full Name: homer homolog 1 (Drosophila)	
Immunogen Catalog Number: AG3109	Calculated MW: 40 kDa	

Applications

Tested Applications:
Sandwich ELISA, Indirect ELISA, Sample test

Species Specificity:
human

Product Information

85692-6-PBS targets HOMER1 as part of a matched antibody pair:

MP02028-3: 85692-6-PBS capture and 85692-5-PBS detection (validated in Sandwich ELISA)

Unconjugated rabbit recombinant monoclonal antibody in PBS only (BSA and azide free) storage buffer at a concentration of 1 mg/mL, ready for conjugation. Created using Proteintech's proprietary in-house recombinant technology. Recombinant production enables unrivalled batch-to-batch consistency, easy scale-up, and future security of supply.

This conjugation ready format makes antibodies ideal for use in many applications including: ELISAs, multiplex assays requiring matched pairs, mass cytometry, and multiplex imaging applications. Antibody use should be optimized by the end user for each application and assay.

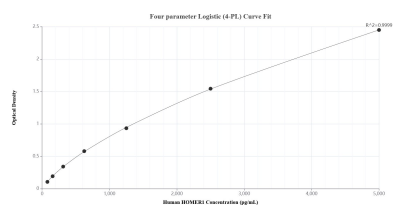
Storage

Storage:
Store at -80°C.
Storage Buffer:
PBS only, pH7.3

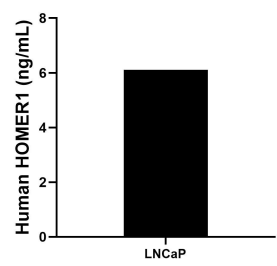
For technical support and original validation data for this product please contact:
T: 1 (888) 4PTGLAB (1-888-478-4522) (toll free in USA), or 1(312) 455-8498 (outside USA)
E: proteintech@ptglab.com
W: ptglab.com

This product is exclusively available under Proteintech Group brand and is not available to purchase from any other manufacturer.

Selected Validation Data



Sandwich ELISA standard curve of MP02028-3, Human HOMER1 Recombinant Matched Antibody Pair - PBS only. 85692-6-PBS was coated to a plate as the capture antibody and incubated with serial dilutions of standard Ag3109. 85692-5-PBS was HRP conjugated as the detection antibody. Range: 78.1-5000 pg/mL.



The mean HOMER1 concentration was determined to be 6.1 ng/mL in LNCaP cell extract based on a 2.6 mg/mL extract load.