

For Research Use Only

RLBP1 Recombinant antibody

Catalog Number: 85697-1-RR



Basic Information

Catalog Number: 85697-1-RR	GenBank Accession Number: BC004199	Purification Method: Protein A purification
Size: 100ul , Concentration: 1000 µg/ml by Nanodrop;	GeneID (NCBI): 6017	CloneNo.: 242989D1
Source: Rabbit	UNIPROT ID: P12271	Recommended Dilutions: WB 1:2000-1:10000 IHC 1:1000-1:4000 IF-P 1:400-1:1600
Isotype: IgG	Full Name: retinaldehyde binding protein 1	
Immunogen Catalog Number: AG7602	Calculated MW: 36 kDa	
	Observed MW: 36 kDa	

Applications

Tested Applications:

WB, IHC, IF-P, ELISA

Species Specificity:

human, mouse, rat

Note-IHC: suggested antigen retrieval with TE buffer pH 9.0; (*) Alternatively, antigen retrieval may be performed with citrate buffer pH 6.0

Positive Controls:

WB : mouse eye tissue, ARPE-19 cells, mouse retina tissue, rat retina tissue

IHC : mouse eye tissue,

IF-P : mouse eye tissue,

Background Information

RLBP1 (Retinaldehyde-binding protein 1) is also named as cellular retinaldehyde-binding protein (CRALBP). CRALBP, a 36-kDa aqueous soluble carrier, is expressed in abundance by both retinal pigment epithelial (RPE) and Muller cells of retina and is important for rod- and cone-driven vision (PMID: 32188692). Retinal RLBP1 expression was decreased in diabetes, and its overexpression in Müller glia mitigated DR-associated neurovascular degeneration (PMID: 33674409).

Storage

Storage:

Store at -20°C. Stable for one year after shipment.

Storage Buffer:

PBS with 0.02% sodium azide and 50% glycerol

Aliquoting is unnecessary for -20°C storage

*** 20ul sizes contain 0.1% BSA

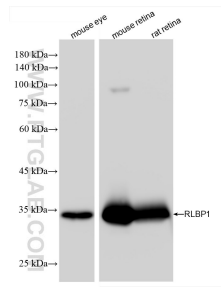
For technical support and original validation data for this product please contact:

T: 1 (888) 4PTGLAB (1-888-478-4522) (toll free in USA), or 1(312) 455-8498 (outside USA)

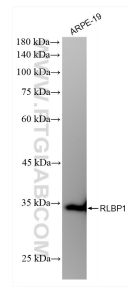
E: proteintech@ptglab.com
W: ptglab.com

This product is exclusively available under Proteintech Group brand and is not available to purchase from any other manufacturer.

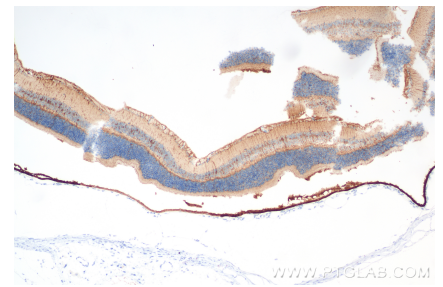
Selected Validation Data



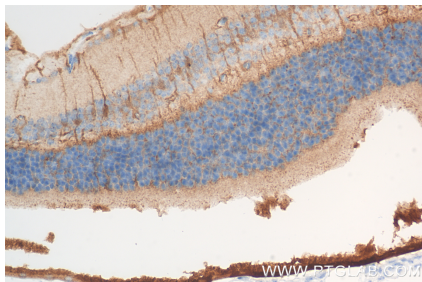
Various lysates were subjected to SDS PAGE followed by western blot with 85697-1-RR (RLBP1 antibody) at dilution of 1:5000 incubated at room temperature for 1.5 hours.



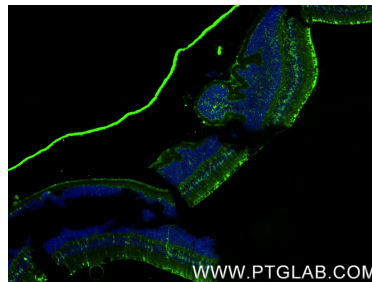
ARPE-19 cells were subjected to SDS PAGE followed by western blot with 85697-1-RR (RLBP1 antibody) at dilution of 1:5000 incubated at room temperature for 1.5 hours.



Immunohistochemical analysis of paraffin-embedded mouse eye tissue slide using 85697-1-RR (RLBP1 antibody) at dilution of 1:2000 (under 10x lens). Heat mediated antigen retrieval with Tris-EDTA buffer (pH 9.0).



Immunohistochemical analysis of paraffin-embedded mouse eye tissue slide using 85697-1-RR (RLBP1 antibody) at dilution of 1:2000 (under 40x lens). Heat mediated antigen retrieval with Tris-EDTA buffer (pH 9.0).



Immunofluorescent analysis of (4% PFA) fixed paraffin-embedded mouse eye tissue using RLBP1 antibody (85697-1-RR, Clone: 242989D1) at dilution of 1:800 and CoraLite®488-Conjugated Goat Anti-Rabbit IgG(H+L) (SA00013-2). Heat mediated antigen retrieval with Tris-EDTA buffer (pH 9.0).