

For Research Use Only

Phospho-ATG4B (Ser383) Recombinant antibody

Catalog Number: 85703-1-RR



Basic Information

Catalog Number:

85703-1-RR

Size:

100ul, Concentration: 1000 µg/ml by Nanodrop;

Source:

Rabbit

Isotype:

IgG

GenBank Accession Number:

BC000719

GeneID (NCBI):

23192

UNIPROT ID:

Q9Y4P1

Full Name:

ATG4 autophagy related 4 homolog B (S. cerevisiae)

Calculated MW:

44 kDa

Observed MW:

44-48 kDa

Purification Method:

Protein A purification

CloneNo.:

242927A2

Recommended Dilutions:

WB: 1:500-1:2000

Applications

Tested Applications:

WB, ELISA

Species Specificity:

human

Positive Controls:

WB: Jurkat cells,

Background Information

ATG4B stimulates autophagy by promoting autophagosome formation through reversible modification of ATG8. In humans, microtubule-associated protein 1 light chain, LC3B, is the best-characterized ATG8 isoform, and ATG4B, but not three other ATG4 isoforms, displays a highly selective preference toward LC3B. MST4 phosphorylates ATG4B at serine residue 383, which stimulates ATG4B activity and increases autophagic flux. (PMID: 29232556, PMID: 36056541)

Storage

Storage:

Store at -20°C. Stable for one year after shipment.

Storage Buffer:

PBS with 0.02% sodium azide and 50% glycerol, pH7.3

Aliquoting is unnecessary for -20°C storage

*** 20ul sizes contain 0.1% BSA

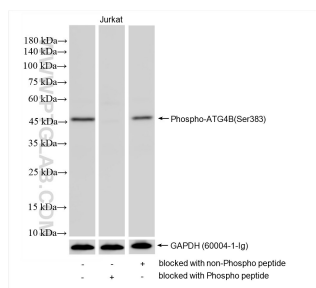
For technical support and original validation data for this product please contact:

T: 1 (888) 4PTGLAB (1-888-478-4522) (toll free in USA), or 1(312) 455-8498 (outside USA)

E: proteintech@ptglab.com
W: ptglab.com

This product is exclusively available under Proteintech Group brand and is not available to purchase from any other manufacturer.

Selected Validation Data



Jurkat cell lysates were subjected to SDS PAGE followed by western blot with 85703-1-RR (Phospho-ATG4B (Ser383) antibody) blocked with BSA only, Phospho-ATG4B (Ser383) peptide or non-Phospho peptide at dilution of 1:1000 incubated at room temperature for 1.5 hours. The membrane was stripped and re-blotted with GAPDH (60004-1-Ig) antibody as a loading control.