

For Research Use Only

# KIF14 Recombinant antibody

Catalog Number: 85707-1-RR



## Basic Information

<b>Catalog Number:</b> 85707-1-RR	<b>GenBank Accession Number:</b> BC113742	<b>Purification Method:</b> Protein A purification
<b>Size:</b> 100ul , Concentration: 1000 µg/ml by Nanodrop;	<b>GeneID (NCBI):</b> 9928	<b>CloneNo.:</b> 243005B8
<b>Source:</b> Rabbit	<b>UNIPROT ID:</b> Q15058	<b>Recommended Dilutions:</b> WB 1:2000-1:10000
<b>Isotype:</b> IgG	<b>Full Name:</b> kinesin family member 14	
<b>Immunogen Catalog Number:</b> AG23219	<b>Observed MW:</b> 186 kDa	

## Applications

<b>Tested Applications:</b> WB, ELISA	<b>Positive Controls:</b> WB : HeLa cells, HEK-293T cells, T-47D cells, HL-60 cells, Jurkat cells, Raji cells
<b>Species Specificity:</b> human	

## Background Information

KIF14 (Kinesin Family Member 14) is a microtubule-based motor protein belonging to the kinesin-3 family. It plays essential roles during cell division and has been implicated in various biological processes, including vesicle transport, chromosome segregation, mitotic spindle formation, and cytokinesis. KIF14 is highly conserved across species and is characterized by a catalytic motor domain that binds to microtubules and ATP, enabling it to convert chemical energy into mechanical work. KIF14 interacts with the Skp1/Cul1/F-box (SCF) complex, particularly Skp2 and Cks1, to regulate the ubiquitination and degradation of p27Kip1. Knockdown of KIF14 results in the accumulation of p27Kip1, leading to cell cycle arrest and apoptosis.(PMID: 34131133, PMID: 24854087)

## Storage

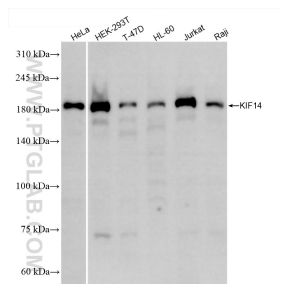
**Storage:**  
Store at -20°C. Stable for one year after shipment.  
**Storage Buffer:**  
PBS with 0.02% sodium azide and 50% glycerol, pH7.3  
Aliquoting is unnecessary for -20°C storage

\*\*\* 20ul sizes contain 0.1% BSA

For technical support and original validation data for this product please contact:  
T: 1 (888) 4PTGLAB (1-888-478-4522) (toll free in USA), or 1(312) 455-8498 (outside USA)  
E: [proteintech@ptglab.com](mailto:proteintech@ptglab.com)  
W: [ptglab.com](http://ptglab.com)

This product is exclusively available under Proteintech Group brand and is not available to purchase from any other manufacturer.

## Selected Validation Data



Various lysates were subjected to SDS PAGE followed by western blot with 85707-1-RR (KIF14 antibody) at dilution of 1:5000 incubated at room temperature for 1.5 hours.