

For Research Use Only

# mDia1 Recombinant antibody, PBS Only

Catalog Number: 85708-2-PBS



## Basic Information

**Catalog Number:**

85708-2-PBS

**Size:**

100ug, Concentration: 1 mg/ml by Nanodrop;

**Source:**

Rabbit

**Isotype:**

IgG

**Immunogen Catalog Number:**

AG14523

**GenBank Accession Number:**

BC007411

**GeneID (NCBI):**

1729

**UNIPROT ID:**

O60610

**Full Name:**

diaphanous homolog 1 (Drosophila)

**Calculated MW:**

1272 aa, 141 kDa

**Observed MW:**

140-150 kDa

**Purification Method:**

Protein A purification

**CloneNo.:**

243001A5

## Applications

**Tested Applications:**

WB, IF/ICC, Indirect ELISA

**Species Specificity:**

human, mouse

## Background Information

mDia1, also known as DIAPH1 or Diap1, is a mammalian diaphanous-related formin which is implicated in multiple physical and pathological events including cytoskeletal dynamics, autosomal hearing loss, and myelodysplasia. Depending upon the cell type and position in the cell cycle, mDia1 has been shown to localize to the cell cortex, trafficking endosomes, cleavage furrow, mid-bodies, and centrosomes, the cytoplasmic microtubule-organizing center crucial for cell division. Mutation of mDia1 has been linked to microcephaly. This antibody recognizes the endogenous mDia1 mainly around 140-150 kDa, while sometimes an additional 70 kDa can also be observed which is proposed to be a fragment of 140-150 kDa molecules (26011179).

## Storage

**Storage:**

Store at -80°C.

**Storage Buffer:**

PBS Only

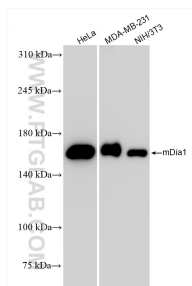
For technical support and original validation data for this product please contact:

T: 1 (888) 4PTGLAB (1-888-478-4522) (toll free in USA), or 1(312) 455-8498 (outside USA)

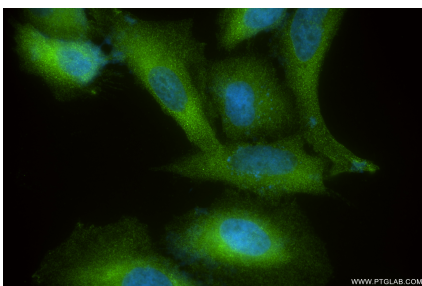
E: [proteintech@ptglab.com](mailto:proteintech@ptglab.com)  
W: [ptglab.com](http://ptglab.com)

This product is exclusively available under Proteintech Group brand and is not available to purchase from any other manufacturer.

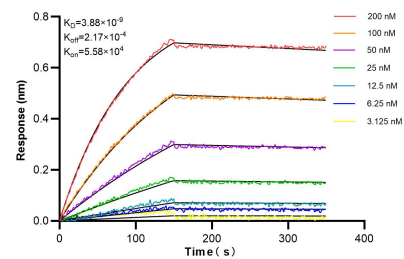
## Selected Validation Data



Various lysates were subjected to SDS PAGE followed by western blot with 85708-2-RR (mDia1 antibody) at dilution of 1:10000 incubated at room temperature for 1.5 hours. This data was developed using the same antibody clone with 85708-2-PBS in a different storage buffer formulation.



Immunofluorescent analysis of (4% PFA) fixed HeLa cells using mDia1 antibody (85708-2-RR, Clone: 243001A5 ) at dilution of 1:500 and CoraLite® 488-Conjugated Goat Anti-Rabbit IgG(H+L) (SA00013-2). This data was developed using the same antibody clone with 85708-2-PBS in a different storage buffer formulation.



Biolayer interferometry (BLI) kinetic assays of 85708-2-RR against Human mDia1 were performed. The affinity constant is 3.88 nM.