

For Research Use Only

# C1QA Recombinant antibody

Catalog Number: 85719-5-RR



## Basic Information

<b>Catalog Number:</b> 85719-5-RR	<b>GenBank Accession Number:</b> NM_015991.4	<b>Purification Method:</b> Protein A purification
<b>Size:</b> 100ul , Concentration: 1000 µg/ml by Nanodrop;	<b>GeneID (NCBI):</b> 712	<b>CloneNo.:</b> 250093B5
<b>Source:</b> Rabbit	<b>UNIPROT ID:</b> P02745	<b>Recommended Dilutions:</b> WB 1:5000-1:50000
<b>Isotype:</b> IgG	<b>Full Name:</b> complement component 1, q subcomponent, A chain	
<b>Immunogen Catalog Number:</b> EG2396	<b>Calculated MW:</b> 26kDa	
	<b>Observed MW:</b> 26-30 kDa	

## Applications

<b>Tested Applications:</b> WB, ELISA	<b>Positive Controls:</b> WB : human plasma,
<b>Species Specificity:</b> human	

## Background Information

The first component of complement, C1, is a calcium-dependent complex of the 3 subcomponents C1q, C1r, and C1s. C1q is composed of 18 polypeptide chains: six A-chains, six B-chains, and six C-chains. Each chain contains a collagen-like region located near the N terminus and a C-terminal globular region. Deficiency of C1q has been associated with lupus erythematosus and glomerulonephritis. This antibody is raised against C1qA which is the A-chain polypeptide of human complement subcomponent C1q.

## Storage

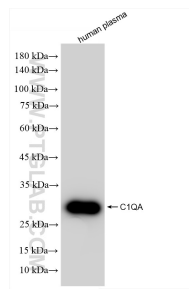
**Storage:**  
Store at -20°C. Stable for one year after shipment.  
**Storage Buffer:**  
PBS with 0.02% sodium azide and 50% glycerol, pH7.3  
**Aliquoting is unnecessary for -20°C storage**

\*\*\* 20ul sizes contain 0.1% BSA

For technical support and original validation data for this product please contact:  
T: 1 (888) 4PTGLAB (1-888-478-4522) (toll free in USA), or 1(312) 455-8498 (outside USA)  
E: proteintech@ptglab.com  
W: ptglab.com

This product is exclusively available under Proteintech Group brand and is not available to purchase from any other manufacturer.

## Selected Validation Data



Various lysates were subjected to SDS PAGE followed by western blot with 85719-5-RR (C1QA antibody) at dilution of 1:10000 incubated at room temperature for 1.5 hours.