

For Research Use Only

Mouse BCHE Recombinant antibody, PBS Only

Catalog Number: 85722-4-PBS



Basic Information

Catalog Number:

85722-4-PBS

Size:

100ug , Concentration: 1 mg/ml by
Nanodrop;

Source:

Rabbit

Isotype:

IgG

Immunogen Catalog Number:

EG2899

GenBank Accession Number:

NM_009738.3

GeneID (NCBI):

12038

UNIPROT ID:

Q03311

Full Name:

butyrylcholinesterase

Calculated MW:

68 kDa

Observed MW:

85-90 kDa

Purification Method:

Protein A purification

CloneNo.:

250086C5

Applications

Tested Applications:

WB, Indirect ELISA

Species Specificity:

mouse

Background Information

Butyrylcholinesterase (BCHE) is an important cholinesterase enzyme involved in the hydrolysis of choline esters. It plays a crucial role in neurotransmitter metabolism, drug metabolism, and various physiological processes. BCHE is highly expressed in the liver, lungs, brain, and heart, but its expression levels vary in different tissues. BCHE-related research helps understand its roles in physiological and pathological processes and provides an important basis for drug development and disease diagnosis.

Storage

Storage:

Store at -80°C.

Storage Buffer:

PBS only, pH7.3

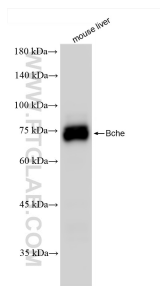
For technical support and original validation data for this product please contact:

T: 1 (888) 4PTGLAB (1-888-478-4522) (toll free
in USA), or 1(312) 455-8498 (outside USA)

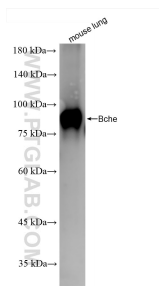
E: proteintech@ptglab.com
W: ptglab.com

This product is exclusively available under Proteintech Group brand and is not available to purchase from any other manufacturer.

Selected Validation Data



mouse liver tissue were subjected to SDS PAGE followed by western blot with 85722-4-RR (Bcl-2 antibody) at dilution of 1:1000 incubated at room temperature for 1.5 hours. This data was developed using the same antibody clone with 85722-4-PBS in a different storage buffer formulation.



mouse lung tissue were subjected to SDS PAGE followed by western blot with 85722-4-RR (Bcl-2 antibody) at dilution of 1:1000 incubated at room temperature for 1.5 hours. This data was developed using the same antibody clone with 85722-4-PBS in a different storage buffer formulation.