

For Research Use Only

# BCHE Recombinant antibody

Catalog Number: 85722-4-RR



## Basic Information

|  |   |   |
|--|---|---|
| <b>Catalog Number:</b><br>85722-4-RR                           | <b>GenBank Accession Number:</b><br>NM_009738.3 | <b>Purification Method:</b><br>Protein A purification |
| <b>Size:</b><br>100ul , Concentration: 1000 µg/ml by Nanodrop; | <b>GeneID (NCBI):</b><br>12038                  | <b>CloneNo.:</b><br>250086C5                          |
| <b>Source:</b><br>Rabbit                                       | <b>UNIPROT ID:</b><br>Q03311                    | <b>Recommended Dilutions:</b><br>WB 1:500-1:2000      |
| <b>Isotype:</b><br>IgG   | <b>Full Name:</b><br>butyrylcholinesterase      |   |
| <b>Immunogen Catalog Number:</b><br>EG2899                     | <b>Calculated MW:</b><br>68 kDa                 |   |
|  | <b>Observed MW:</b><br>85-90 kDa                |   |

## Applications

|  |   |
|--|---|
| <b>Tested Applications:</b><br>WB, ELISA | <b>Positive Controls:</b>   |
| <b>Species Specificity:</b><br>mouse     | <b>WB :</b> mouse liver tissue, mouse heart tissue, mouse lung tissue |

## Background Information

Butyrylcholinesterase (BCHE) is an important cholinesterase enzyme involved in the hydrolysis of choline esters. It plays a crucial role in neurotransmitter metabolism, drug metabolism, and various physiological processes. BCHE is highly expressed in the liver, lungs, brain, and heart, but its expression levels vary in different tissues. BCHE-related research helps understand its roles in physiological and pathological processes and provides an important basis for drug development and disease diagnosis.

## Storage

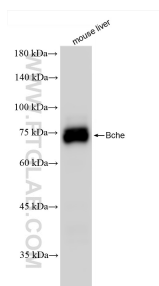
**Storage:**  
Store at -20°C. Stable for one year after shipment.  
**Storage Buffer:**  
PBS with 0.02% sodium azide and 50% glycerol, pH7.3  
**Aliquoting is unnecessary for -20°C storage**

\*\*\* 20ul sizes contain 0.1% BSA

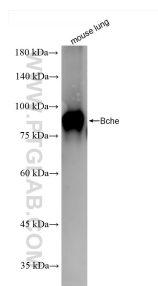
For technical support and original validation data for this product please contact:  
T: 1 (888) 4PTGLAB (1-888-478-4522) (toll free in USA), or 1(312) 455-8498 (outside USA)  
E: [proteintech@ptglab.com](mailto:proteintech@ptglab.com)  
W: [ptglab.com](http://ptglab.com)

This product is exclusively available under Proteintech Group brand and is not available to purchase from any other manufacturer.

## Selected Validation Data



mouse liver tissue were subjected to SDS PAGE followed by western blot with 85722-4-RR (Bcl-2 antibody) at dilution of 1:1000 incubated at room temperature for 1.5 hours.



mouse lung tissue were subjected to SDS PAGE followed by western blot with 85722-4-RR (Bcl-2 antibody) at dilution of 1:1000 incubated at room temperature for 1.5 hours.