

For Research Use Only

Mouse Crtam α CD355 α Recombinant antibody, PBS Only (Capture)

Catalog Number:85724-4-PBS



Basic Information

Catalog Number: 85724-4-PBS	GenBank Accession Number: NM_001281954.1	Purification Method: Protein A purification
Size: 100ug , Concentration: 1 mg/ml by Nanodrop;	GeneID (NCBI): 54698	CloneNo.: 250055G4
Source: Rabbit	UNIPROT ID: Q149L7-1	
Isotype: IgG	Full Name: cytotoxic and regulatory T cell molecule	
Immunogen Catalog Number: EG2691	Calculated MW: 44 kDa	

Applications

Tested Applications:
Cytometric bead array, Sandwich ELISA, Indirect ELISA, Sample test

Species Specificity:
mouse

Product Information

85724-4-PBS targets Crtam CD355 as part of a matched antibody pair:

MP02101-1: 85724-4-PBS capture and 85724-3-PBS detection (validated in Cytometric bead array)

MP02101-3: 85724-4-PBS capture and 85724-6-PBS detection (validated in Sandwich ELISA)

Unconjugated rabbit recombinant monoclonal antibody in PBS only (BSA and azide free) storage buffer at a concentration of 1 mg/mL, ready for conjugation. Created using Proteintech's proprietary in-house recombinant technology. Recombinant production enables unrivalled batch-to-batch consistency, easy scale-up, and future security of supply.

This conjugation ready format makes antibodies ideal for use in many applications including: ELISAs, multiplex assays requiring matched pairs, mass cytometry, and multiplex imaging applications. Antibody use should be optimized by the end user for each application and assay.

Storage

Storage:
Store at -80°C.
Storage Buffer:
PBS only, pH7.3

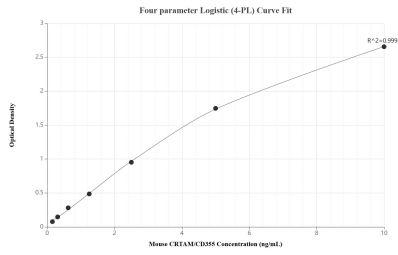
For technical support and original validation data for this product please contact:

T: 1 (888) 4PTGLAB (1-888-478-4522) (toll free in USA), or 1(312) 455-8498 (outside USA)

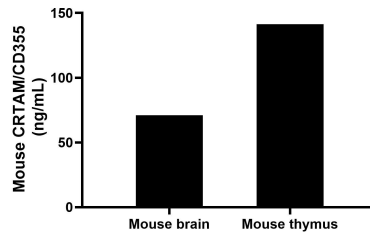
E: proteintech@ptglab.com
W: ptglab.com

This product is exclusively available under Proteintech Group brand and is not available to purchase from any other manufacturer.

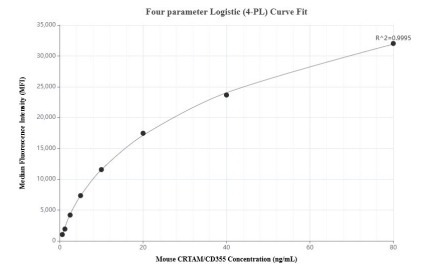
Selected Validation Data



Sandwich ELISA standard curve of MP02101-3, Mouse CRTAM/CD355 Recombinant Matched Antibody Pair - PBS only. 85724-4-PBS was coated to a plate as the capture antibody and incubated with serial dilutions of standard Eg2691. 85724-6-PBS was HRP conjugated as the detection antibody. Range: 0.156-10 ng/mL



The mean CRTAM/CD355 concentration was determined to be 70.99 ng/mL in mouse brain tissue extract based on a 6.60 mg/mL extract load and 141.42 ng/mL in mouse thymus tissue extract based on a 5.80 mg/mL extract load.



Cytometric bead array standard curve of MP02101-1, MOUSE CRTAM/CD355 Recombinant Matched Antibody Pair, PBS Only. Capture antibody: 85724-4-PBS. Detection antibody: 85724-3-PBS. Standard: Eg2691. Range: 0.625-80 ng/mL