

For Research Use Only

# STIM2 Recombinant antibody, PBS Only

Catalog Number: 85727-1-PBS



## Basic Information

<b>Catalog Number:</b> 85727-1-PBS	<b>GenBank Accession Number:</b> BC146661	<b>Purification Method:</b> Protein A purification
<b>Size:</b> 100ug , Concentration: 1 mg/ml by Nanodrop;	<b>GeneID (NCBI):</b> 57620	<b>CloneNo.:</b> 250016E8
<b>Source:</b> Rabbit	<b>UNIPROT ID:</b> Q9P246	
<b>Isotype:</b> IgG	<b>Full Name:</b> stromal interaction molecule 2	
<b>Immunogen Catalog Number:</b> AG15530	<b>Calculated MW:</b> 754 aa, 85 kDa	
	<b>Observed MW:</b> 85-115 kDa	

## Applications

**Tested Applications:**  
WB, Indirect ELISA

**Species Specificity:**  
human

## Background Information

STIM2, also named as KIAA1482, functions as a highly sensitive Ca<sup>2+</sup> sensor in the endoplasmic reticulum which activates both store-operated and store-independent Ca<sup>2+</sup>-influx. Regulates basal cytosolic and endoplasmic reticulum Ca<sup>2+</sup> concentrations. Upon mild variations of the endoplasmic reticulum Ca<sup>2+</sup> concentration, STIM2 translocates from the endoplasmic reticulum to the plasma membrane where it probably activates the Ca<sup>2+</sup> release-activated Ca<sup>2+</sup> (CRAC) channels ORAI1, ORAI2 and ORAI3. STIM2 may inhibit STIM1-mediated Ca<sup>2+</sup> influx. STIM2 has 2 isoforms 105kd and 115kd with Differential levels of phosphorylation.

## Storage

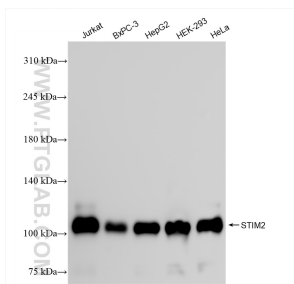
**Storage:**  
Store at -80°C.

**Storage Buffer:**  
PBS only, pH7.3

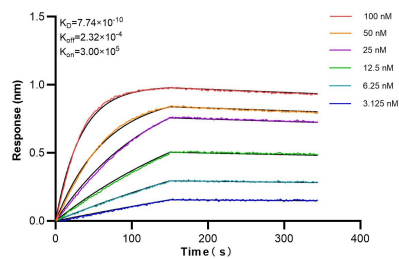
For technical support and original validation data for this product please contact:  
T: 1 (888) 4PTGLAB (1-888-478-4522) (toll free in USA), or 1(312) 455-8498 (outside USA)  
E: [proteintech@ptglab.com](mailto:proteintech@ptglab.com)  
W: [ptglab.com](http://ptglab.com)

This product is exclusively available under Proteintech Group brand and is not available to purchase from any other manufacturer.

## Selected Validation Data



Various lysates were subjected to SDS PAGE followed by western blot with 85727-1-RR (STIM2 antibody) at dilution of 1:10000 incubated at room temperature for 1.5 hours. This data was developed using the same antibody clone with 85727-1-PBS in a different storage buffer formulation.



Biolayer interferometry (BLI) kinetic assays of 85727-1-RR against Human STIM2 were performed. The affinity constant is 0.774 nM.