

For Research Use Only

STIM2 Recombinant antibody

Catalog Number: 85727-1-RR



Basic Information

Catalog Number: 85727-1-RR	GenBank Accession Number: BC146661	Purification Method: Protein A purification
Size: 100ul , Concentration: 1000 µg/ml by Nanodrop;	GeneID (NCBI): 57620	CloneNo.: 250016E8
Source: Rabbit	UNIPROT ID: Q9P246	Recommended Dilutions: WB 1:5000-1:50000
Isotype: IgG	Full Name: stromal interaction molecule 2	
Immunogen Catalog Number: AG15530	Calculated MW: 754 aa, 85 kDa	
	Observed MW: 85-115 kDa	

Applications

Tested Applications: WB, ELISA	Positive Controls:
Species Specificity: human	WB : Jurkat cells, BxPC-3 cells, HepG2 cells, HEK-293 cells, HeLa cells

Background Information

STIM2, also named as KIAA1482, functions as a highly sensitive Ca²⁺ sensor in the endoplasmic reticulum which activates both store-operated and store-independent Ca²⁺-influx. Regulates basal cytosolic and endoplasmic reticulum Ca²⁺ concentrations. Upon mild variations of the endoplasmic reticulum Ca²⁺ concentration, STIM2 translocates from the endoplasmic reticulum to the plasma membrane where it probably activates the Ca²⁺ release-activated Ca²⁺ (CRAC) channels ORAI1, ORAI2 and ORAI3. STIM2 may inhibit STIM1-mediated Ca²⁺ influx. STIM2 has 2 isoforms 105kd and 115kd with Differential levels of phosphorylation.

Storage

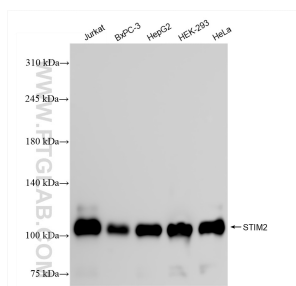
Storage:
Store at -20°C. Stable for one year after shipment.
Storage Buffer:
PBS with 0.02% sodium azide and 50% glycerol, pH7.3
Aliquoting is unnecessary for -20°C storage

*** 20ul sizes contain 0.1% BSA

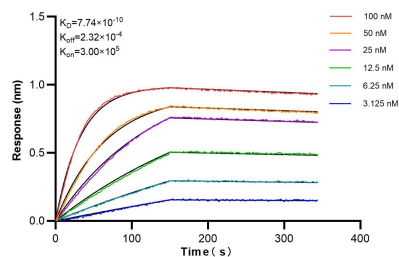
For technical support and original validation data for this product please contact:
T: 1 (888) 4PTGLAB (1-888-478-4522) (toll free in USA), or 1(312) 455-8498 (outside USA)
E: proteintech@ptglab.com
W: ptglab.com

This product is exclusively available under Proteintech Group brand and is not available to purchase from any other manufacturer.

Selected Validation Data



Various lysates were subjected to SDS PAGE followed by western blot with 85727-1-RR (STIM2 antibody) at dilution of 1:10000 incubated at room temperature for 1.5 hours.



Biolayer interferometry (BLI) kinetic assays of 85727-1-RR against Human STIM2 were performed. The affinity constant is 0.774 nM.