

For Research Use Only

# ZEB1 Recombinant antibody, PBS Only

Catalog Number: 85729-1-PBS



## Basic Information

<b>Catalog Number:</b> 85729-1-PBS	<b>GenBank Accession Number:</b> BC112392	<b>Purification Method:</b> Protein A purification
<b>Size:</b> 100ug, Concentration: 1 mg/ml by Nanodrop;	<b>GeneID (NCBI):</b> 6935	<b>CloneNo.:</b> 243139F8
<b>Source:</b> Rabbit	<b>UNIPROT ID:</b> P37275	
<b>Isotype:</b> IgG	<b>Full Name:</b> zinc finger E-box binding homeobox 1	
<b>Immunogen Catalog Number:</b> AG16204	<b>Calculated MW:</b> 1125 aa, 124 kDa	
	<b>Observed MW:</b> 190-210 kDa	

## Applications

**Tested Applications:**  
WB, IF/ICC, Indirect ELISA

**Species Specificity:**  
human, mouse, rat

## Background Information

ZEB1(zinc-finger-enhancer binding protein 1), which is a member of the Zinc finger-Homeobox (ZFH) family of repressors, acts as a transcriptional repressor that inhibits interleukin-2 (IL-2) gene expression. Depending on the quantity of cDNA and on the cell type, ZEB1 can enhance or repress the promoter activity of the ATP1A1 gene. Represses E-cadherin promoter and induces an epithelial-mesenchymal transition (EMT) by recruiting SMARCA4/BRG1. Represses BCL6 transcription in the presence of the corepressor CTBP1. Positively regulates neuronal differentiation. The calculated molecular weight of ZEB1 is 124 kDa, but the post-phosphorylation of protein is about 190-210 kDa.

## Storage

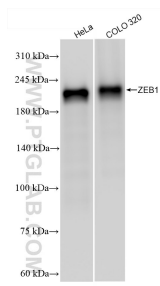
**Storage:**  
Store at -80°C.

**Storage Buffer:**  
PBS only, pH7.3

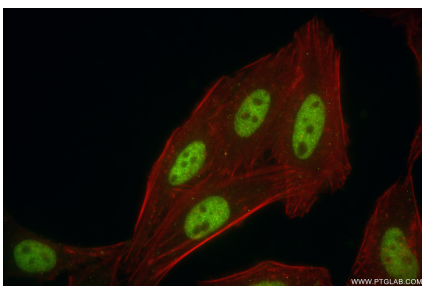
For technical support and original validation data for this product please contact:  
T: 1 (888) 4PTGLAB (1-888-478-4522) (toll free in USA), or 1(312) 455-8498 (outside USA)  
E: [proteintech@ptglab.com](mailto:proteintech@ptglab.com)  
W: [ptglab.com](http://ptglab.com)

This product is exclusively available under Proteintech Group brand and is not available to purchase from any other manufacturer.

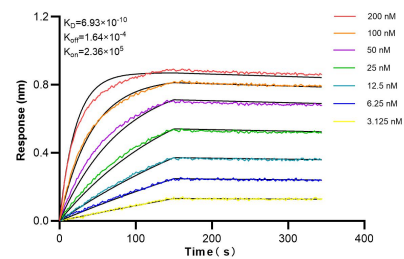
Selected Validation Data



Various lysates were subjected to SDS PAGE followed by western blot with 85729-1-RR (ZEB1 antibody) at dilution of 1:10000 incubated at room temperature for 1.5 hours. This data was developed using the same antibody clone with 85729-1-PBS in a different storage buffer formulation.



Immunofluorescent analysis of (4% PFA) fixed HeLa cells using ZEB1 antibody (85729-1-RR, Clone: 243139F8) at dilution of 1:500 and CoraLite®488-Conjugated Goat Anti-Rabbit IgG(H+L) (SA00013-2), CL594-Phalloidin (red). This data was developed using the same antibody clone with 85729-1-PBS in a different storage buffer formulation.



Biolayer interferometry (BLI) kinetic assays of 85729-1-RR against Human ZEB1 were performed. The affinity constant is 0.693 nM.