

For Research Use Only

ZEB1 Recombinant antibody

Catalog Number: 85729-1-RR



Basic Information

Catalog Number: 85729-1-RR	GenBank Accession Number: BC112392	Purification Method: Protein A purification
Size: 100ul , Concentration: 1000 µg/ml by Nanodrop;	GeneID (NCBI): 6935	CloneNo.: 243139F8
Source: Rabbit	UNIPROT ID: P37275	Recommended Dilutions: WB 1:5000-1:50000 IF/ICC 1:250-1:1000
Isotype: IgG	Full Name: zinc finger E-box binding homeobox 1	
Immunogen Catalog Number: AG16204	Calculated MW: 1125 aa, 124 kDa	
	Observed MW: 190-210 kDa	

Applications

Tested Applications: WB, IF/ICC, ELISA	Positive Controls:
Species Specificity: human, mouse, rat	WB : HeLa cells, HepG2 cells, mouse colon tissue, NIH/3T3 cells, COLO 320 cells, rat colon tissue
	IF/ICC : HeLa cells, NIH/3T3 cells

Background Information

ZEB1(zinc-finger-enhancer binding protein 1), which is a member of the Zinc finger-Homeobox (ZFH) family of repressors, acts as a transcriptional repressor that inhibits interleukin-2 (IL-2) gene expression. Depending on the quantity of cDNA and on the cell type, ZEB1 can enhance or repress the promoter activity of the ATP1A1 gene. Represses E-cadherin promoter and induces an epithelial-mesenchymal transition (EMT) by recruiting SMARCA4/BRG1. Represses BCL6 transcription in the presence of the corepressor CTBP1. Positively regulates neuronal differentiation. The calculated molecular weight of ZEB1 is 124 kDa, but the post-phosphorylation of protein is about 190-210 kDa.

Storage

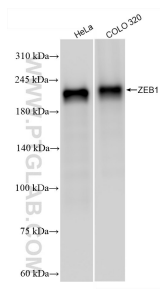
Storage:
Store at -20°C. Stable for one year after shipment.
Storage Buffer:
PBS with 0.02% sodium azide and 50% glycerol, pH7.3
Aliquoting is unnecessary for -20°C storage

*** 20ul sizes contain 0.1% BSA

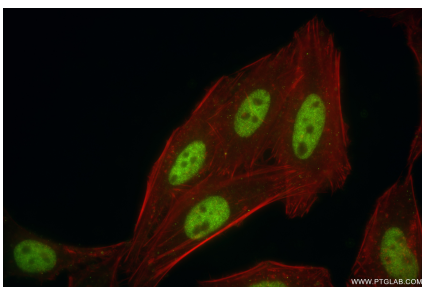
For technical support and original validation data for this product please contact:
T: 1 (888) 4PTGLAB (1-888-478-4522) (toll free in USA), or 1(312) 455-8498 (outside USA)
E: proteintech@ptglab.com
W: ptglab.com

This product is exclusively available under Proteintech Group brand and is not available to purchase from any other manufacturer.

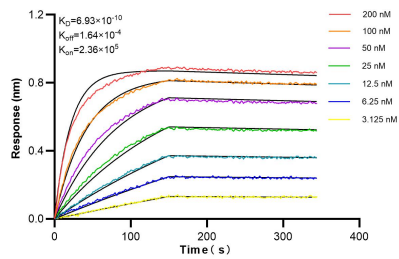
Selected Validation Data



Various lysates were subjected to SDS PAGE followed by western blot with 85729-1-RR (ZEB1 antibody) at dilution of 1:10000 incubated at room temperature for 1.5 hours.



Immunofluorescent analysis of (4% PFA) fixed HeLa cells using ZEB1 antibody (85729-1-RR, Clone: 243139F8) at dilution of 1:500 and CoraLite®488-Conjugated Goat Anti-Rabbit IgG(H+L) (SA00013-2), CL594-Phalloidin (red).



Biolayer interferometry (BLI) kinetic assays of 85729-1-RR against Human ZEB1 were performed. The affinity constant is 0.693 nM.