

For Research Use Only

# ZEB1 Recombinant antibody, PBS Only (Capture)

Catalog Number: 85729-6-PBS



## Basic Information

<b>Catalog Number:</b> 85729-6-PBS	<b>GenBank Accession Number:</b> BC112392	<b>Purification Method:</b> Protein A purification
<b>Size:</b> 100ug, Concentration: 1 mg/ml by Nanodrop;	<b>GeneID (NCBI):</b> 6935	<b>CloneNo.:</b> 243139C5
<b>Source:</b> Rabbit	<b>UNIPROT ID:</b> P37275	
<b>Isotype:</b> IgG	<b>Full Name:</b> zinc finger E-box binding homeobox 1	
<b>Immunogen Catalog Number:</b> AG16204	<b>Calculated MW:</b> 1125 aa, 124 kDa	

## Applications

**Tested Applications:**  
Cytometric bead array, Sandwich ELISA, Indirect ELISA, Sample test

**Species Specificity:**  
human

## Product Information

85729-6-PBS targets ZEB1 as part of a matched antibody pair.

MP02086-1: 85729-6-PBS capture and 85729-5-PBS detection (validated in Cytometric bead array, Sandwich ELISA)

Unconjugated rabbit recombinant monoclonal antibody in PBS only (BSA and azide free) storage buffer at a concentration of 1 mg/mL, ready for conjugation. Created using Proteintech's proprietary in-house recombinant technology. Recombinant production enables unrivalled batch-to-batch consistency, easy scale-up, and future security of supply.

This conjugation ready format makes antibodies ideal for use in many applications including: ELISAs, multiplex assays requiring matched pairs, mass cytometry, and multiplex imaging applications. Antibody use should be optimized by the end user for each application and assay.

## Storage

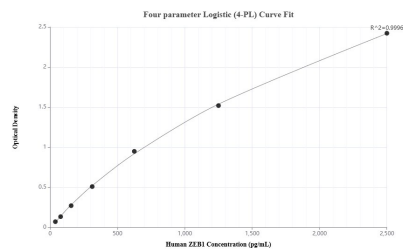
**Storage:**  
Store at -80°C.

**Storage Buffer:**  
PBS Only

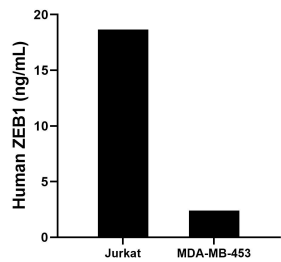
For technical support and original validation data for this product please contact:  
T: 1 (888) 4PTGLAB (1-888-478-4522) (toll free in USA), or 1(312) 455-8498 (outside USA)  
E: [proteintech@ptglab.com](mailto:proteintech@ptglab.com)  
W: [ptglab.com](http://ptglab.com)

This product is exclusively available under Proteintech Group brand and is not available to purchase from any other manufacturer.

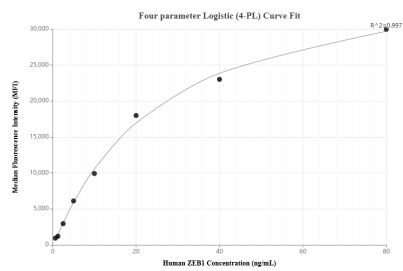
## Selected Validation Data



Sandwich ELISA standard curve of MP02086-1, Human ZEB1 Recombinant Matched Antibody Pair - PBS only. 85729-6-PBS was coated to a plate as the capture antibody and incubated with serial dilutions of standard Ag16204. 85729-5-PBS was HRP conjugated as the detection antibody. Range: 39.1-2500 pg/mL



The mean ZEB1 concentration was determined to be 18.65 ng/mL in Jurkat cell extract based on a 1.9 mg/mL extract load and 2.41 ng/mL in MDA-MB-453 cell extract based on a 1.5 mg/mL extract load.



Cytometric bead array standard curve of MP02086-1, ZEB1 Recombinant Matched Antibody Pair, PBS Only. Capture antibody: 85729-6-PBS. Detection antibody: 85729-5-PBS. Standard: Ag16204. Range: 0.625-80 ng/mL