

For Research Use Only

# Mouse NOV/CCN3 Recombinant antibody, PBS Only (Detector)

Catalog Number: 85731-1-PBS



## Basic Information

<b>Catalog Number:</b> 85731-1-PBS	<b>GenBank Accession Number:</b> NM_010930.4	<b>Purification Method:</b> Protein A purification
<b>Size:</b> 100ug, Concentration: 1 mg/ml by Nanodrop;	<b>GeneID (NCBI):</b> 18133	<b>CloneNo.:</b> 250054B2
<b>Source:</b> Rabbit	<b>UNIPROT ID:</b> Q64299	
<b>Isotype:</b> IgG	<b>Full Name:</b> nephroblastoma overexpressed gene	
<b>Immunogen Catalog Number:</b> EG2856	<b>Calculated MW:</b> 39 kDa	
	<b>Observed MW:</b> 46 kDa	

## Applications

**Tested Applications:**  
WB, Cytometric bead array, Indirect ELISA

**Species Specificity:**  
human, mouse, rat

## Product Information

85731-1-PBS targets NOV/CCN3 as part of a matched antibody pair:

MP02088-1: 85731-2-PBS capture and 85731-1-PBS detection (validated in Cytometric bead array)

Unconjugated rabbit recombinant monoclonal antibody in PBS only (BSA and azide free) storage buffer at a concentration of 1 mg/mL, ready for conjugation. Created using Proteintech's proprietary in-house recombinant technology. Recombinant production enables unrivalled batch-to-batch consistency, easy scale-up, and future security of supply.

This conjugation ready format makes antibodies ideal for use in many applications including: ELISAs, multiplex assays requiring matched pairs, mass cytometry, and multiplex imaging applications. Antibody use should be optimized by the end user for each application and assay.

## Background Information

CCN family member 3 (CCN3), also known as Nephroblastoma overexpressed (NOV) protein, is a member of the CCN protein family (PMID: 1309586). CCN3 is predominantly expressed in the cytoplasm, nucleus, and extracellular space. As a subset of extracellular matrix proteins, it can directly bind to the integrin receptor family on the cell surface and participate in signal transduction between the cell surface and the extracellular matrix structure (PMID: 37378812). CCN3 exhibits anti-proliferative activity in normal cells and most tumor cells (PMID: 17340618). CCN3 co-localizes with connexin 43 (C×43) in the plasma membrane, and these two proteins physically interact to inhibit cell growth (PMID: 15213231). CCN3 can induce myofibroblast differentiation through the Notch pathway (PMID: 12050162). CCN can promote adhesion of endothelial cells, vascular smooth muscle cells, and fibroblasts through heparan sulfate proteoglycans (HSPG) (PMID: 30158025).

## Storage

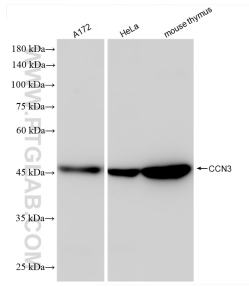
**Storage:**  
Store at -80°C.

**Storage Buffer:**  
PBS only, pH7.3

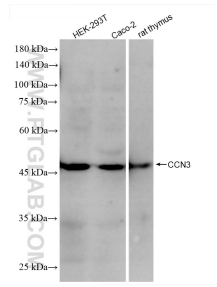
For technical support and original validation data for this product please contact:  
T: 1 (888) 4PTGLAB (1-888-478-4522) (toll free in USA), or 1(312) 455-8498 (outside USA) E: proteintech@ptglab.com W: ptglab.com

**This product is exclusively available under Proteintech Group brand and is not available to purchase from any other manufacturer.**

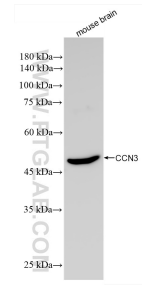
## Selected Validation Data



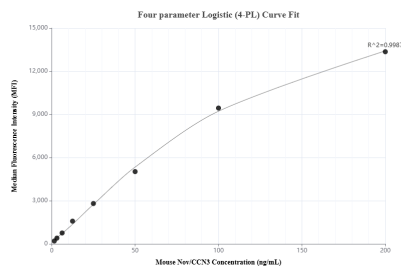
Various lysates were subjected to SDS PAGE followed by western blot with 85731-1-RR (Nov antibody) at dilution of 1:2000 incubated at room temperature for 1.5 hours. This data was developed using the same antibody clone with 85731-1-PBS in a different storage buffer formulation.



Various lysates were subjected to SDS PAGE followed by western blot with 85731-1-RR (Nov antibody) at dilution of 1:2000 incubated at room temperature for 1.5 hours. This data was developed using the same antibody clone with 85731-1-PBS in a different storage buffer formulation.



Mouse brain tissue was subjected to SDS PAGE followed by western blot with 85731-1-RR (Nov antibody) at dilution of 1:10000 incubated at room temperature for 1.5 hours. This data was developed using the same antibody clone with 85731-1-PBS in a different storage buffer formulation.



Cytometric bead array standard curve of MP02088-1, MOUSE Nov/CCN3 Recombinant Matched Antibody Pair, PBS Only. Capture antibody: 85731-2-PBS. Detection antibody: 85731-1-PBS. Standard: Eg2856. Range: 1.563-200 ng/mL.