

For Research Use Only

# NOV/CCN3 Recombinant antibody

Catalog Number: 85731-1-RR



## Basic Information

<b>Catalog Number:</b> 85731-1-RR	<b>GenBank Accession Number:</b> NM_010930.4	<b>Purification Method:</b> Protein A purification
<b>Size:</b> 100ul , Concentration: 1000 µg/ml by Nanodrop;	<b>GeneID (NCBI):</b> 18133	<b>CloneNo.:</b> 25005482
<b>Source:</b> Rabbit	<b>UNIPROT ID:</b> Q64299	<b>Recommended Dilutions:</b> WB 1:1000-1:4000
<b>Isotype:</b> IgG	<b>Full Name:</b> nephroblastoma overexpressed gene	
<b>Immunogen Catalog Number:</b> EG2856	<b>Calculated MW:</b> 39 kDa	
	<b>Observed MW:</b> 46 kDa	

## Applications

<b>Tested Applications:</b> WB, ELISA	<b>Positive Controls:</b>
<b>Species Specificity:</b> human, mouse, rat	<b>WB :</b> A172 cells, HEK-293T cells, mouse brain tissue, HeLa cells, mouse thymus tissue, Caco-2 cells, rat thymus tissue

## Background Information

CCN family member 3 (CCN3), also known as Nephroblastoma overexpressed (NOV) protein, is a member of the CCN protein family (PMID: 1309586). CCN3 is predominantly expressed in the cytoplasm, nucleus, and extracellular space. As a subset of extracellular matrix proteins, it can directly bind to the integrin receptor family on the cell surface and participate in signal transduction between the cell surface and the extracellular matrix structure (PMID: 37378812). CCN3 exhibits anti-proliferative activity in normal cells and most tumor cells (PMID: 17340618). CCN3 co-localizes with connexin 43 (C×43) in the plasma membrane, and these two proteins physically interact to inhibit cell growth (PMID: 15213231). CCN3 can induce myofibroblast differentiation through the Notch pathway (PMID: 12050162). CCN can promote adhesion of endothelial cells, vascular smooth muscle cells, and fibroblasts through heparan sulfate proteoglycans (HSPG) (PMID: 30158025).

## Storage

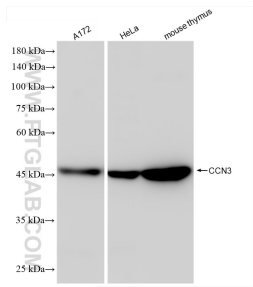
**Storage:**  
Store at -20°C. Stable for one year after shipment.  
**Storage Buffer:**  
PBS with 0.02% sodium azide and 50% glycerol, pH7.3  
**Aliquoting is unnecessary for -20°C storage**

\*\*\* 20ul sizes contain 0.1% BSA

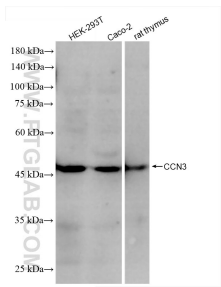
For technical support and original validation data for this product please contact:  
T: 1 (888) 4PTGLAB (1-888-478-4522) (toll free in USA), or 1(312) 455-8498 (outside USA)  
E: [proteintech@ptglab.com](mailto:proteintech@ptglab.com)  
W: [ptglab.com](http://ptglab.com)

This product is exclusively available under Proteintech Group brand and is not available to purchase from any other manufacturer.

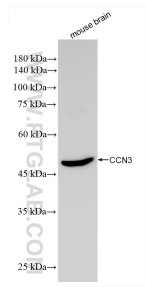
## Selected Validation Data



Various lysates were subjected to SDS PAGE followed by western blot with 85731-1-RR (Nov antibody) at dilution of 1:2000 incubated at room temperature for 1.5 hours.



Various lysates were subjected to SDS PAGE followed by western blot with 85731-1-RR (Nov antibody) at dilution of 1:2000 incubated at room temperature for 1.5 hours.



Mouse brain tissue was subjected to SDS PAGE followed by western blot with 85731-1-RR (Nov antibody) at dilution of 1:10000 incubated at room temperature for 1.5 hours.