

For Research Use Only

A2BP1 Recombinant antibody, PBS Only (Capture)

Catalog Number: 85732-2-PBS



Basic Information

Catalog Number: 85732-2-PBS	GenBank Accession Number: BC113691	Purification Method: Protein A purification
Size: 100ug , Concentration: 1 mg/ml by Nanodrop;	GeneID (NCBI): 54715	CloneNo.: 243149B4
Source: Rabbit	UNIPROT ID: Q9NWB1	
Isotype: IgG	Full Name: ataxin 2-binding protein 1	
Immunogen Catalog Number: AG18527	Calculated MW: 395 aa, 42 kDa	
	Observed MW: 45-60 kDa	

Applications

Tested Applications:
WB, Cytometric bead array, Indirect ELISA

Species Specificity:
human, mouse, rat

Product Information

85732-2-PBS targets A2BP1 as part of a matched antibody pair:

MP02075-1: 85732-2-PBS capture and 85732-4-PBS detection (validated in Cytometric bead array)

Unconjugated rabbit recombinant monoclonal antibody in PBS only (BSA and azide free) storage buffer at a concentration of 1 mg/mL, ready for conjugation. Created using Proteintech's proprietary in-house recombinant technology. Recombinant production enables unrivalled batch-to-batch consistency, easy scale-up, and future security of supply.

This conjugation ready format makes antibodies ideal for use in many applications including: ELISAs, multiplex assays requiring matched pairs, mass cytometry, and multiplex imaging applications. Antibody use should be optimized by the end user for each application and assay.

Background Information

A2BP1, also named as FOX1 and HRNBP1, contains one RRM (RNA recognition motif) domain. A2BP1 recognizes a (U)GCAUG stretch in regulated exons or in flanking introns. The protein binds to the C-terminus of ataxin-2 and may contribute to the restricted pathology of spinocerebellar ataxia type 2 (SCA2). Ataxin-2 is the product of the SCA2 gene which causes familial neurodegenerative diseases. A2BP1 and ataxin-2 are both localized in the trans-Golgi network.

Storage

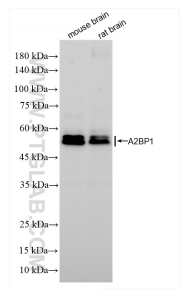
Storage:
Store at -80°C.

Storage Buffer:
PBS only, pH7.3

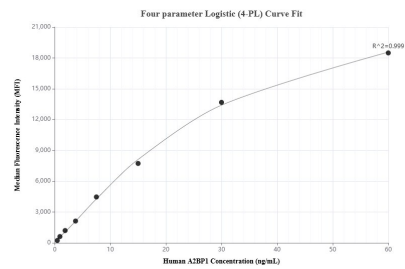
For technical support and original validation data for this product please contact:
T: 1 (888) 4PTGLAB (1-888-478-4522) (toll free in USA), or 1(312) 455-8498 (outside USA)
E: proteintech@ptglab.com
W: ptglab.com

This product is exclusively available under Proteintech Group brand and is not available to purchase from any other manufacturer.

Selected Validation Data



Various lysates were subjected to SDS PAGE followed by western blot with 85732-2-RR (A2BP1 antibody) at dilution of 1:1000 incubated at room temperature for 1.5 hours. This data was developed using the same antibody clone with 85732-2-PBS in a different storage buffer formulation.



Cytometric bead array standard curve of MP02075-1, A2BP1 Recombinant Matched Antibody Pair, PBS Only. Capture antibody: 85732-2-PBS. Detection antibody: 85732-4-PBS. Standard: Ag18527. Range: 0.469-60 ng/mL.