

For Research Use Only

PKC Iota Recombinant antibody, PBS Only (Detector)

Catalog Number: 85733-2-PBS



Basic Information

Catalog Number: 85733-2-PBS	GenBank Accession Number: BC022016	Purification Method: Protein A purification
Size: 100ug , Concentration: 1 mg/ml by Nanodrop;	GeneID (NCBI): 5584	CloneNo.: 243126A4
Source: Rabbit	UNIPROT ID: P41743	
Isotype: IgG	Full Name: protein kinase C, iota	
Immunogen Catalog Number: AG4990	Calculated MW: 68 kDa	
	Observed MW: 67 kDa	

Applications

Tested Applications:
WB, Sandwich ELISA, Indirect ELISA, Sample test

Species Specificity:
human, mouse, rat

Product Information

85733-2-PBS targets PKC Iota as part of a matched antibody pair:

MP02074-3: 85733-6-PBS capture and 85733-2-PBS detection (validated in Sandwich ELISA)

Unconjugated rabbit recombinant monoclonal antibody in PBS only (BSA and azide free) storage buffer at a concentration of 1 mg/mL, ready for conjugation. Created using Proteintech's proprietary in-house recombinant technology. Recombinant production enables unrivalled batch-to-batch consistency, easy scale-up, and future security of supply.

This conjugation ready format makes antibodies ideal for use in many applications including: ELISAs, multiplex assays requiring matched pairs, mass cytometry, and multiplex imaging applications. Antibody use should be optimized by the end user for each application and assay.

Background Information

The atypical protein kinase C isoform PRKC iota (PRKCI) is a member of the protein kinase C (PKC) family of serine/threonine protein kinases. PKC family comprises at least eight members, which are differentially expressed and are involved in a wide variety of cellular processes. PRKC iota is calcium-independent and phospholipid-dependent. It is not activated by phorbol esters or diacylglycerol. This kinase can be recruited to vesicle tubular clusters (VTCs) by direct interaction with the small GTPase RAB2, where this kinase phosphorylates glyceraldehyde-3-phosphate dehydrogenase (GAPD/GAPDH) and plays a role in microtubule dynamics in the early secretory pathway. This kinase is found to be necessary for BCL-ABL-mediated resistance to drug-induced apoptosis and therefore protects leukemia cells against drug-induced apoptosis. PRKC iota plays a key role in cell proliferation, differentiation, and carcinogenesis, and it has been shown to be a human oncogene.

Storage

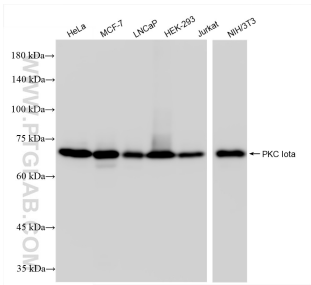
Storage:
Store at -80°C.

Storage Buffer:
PBS only, pH7.3

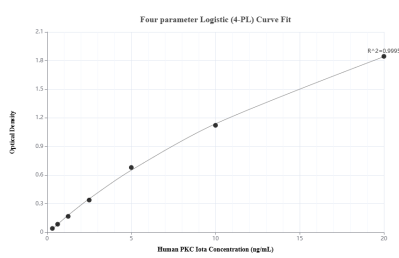
For technical support and original validation data for this product please contact:
T: 1 (888) 4PTGLAB (1-888-478-4522) (toll free in USA), or 1(312) 455-8498 (outside USA)
E: proteintech@ptglab.com
W: ptglab.com

This product is exclusively available under Proteintech Group brand and is not available to purchase from any other manufacturer.

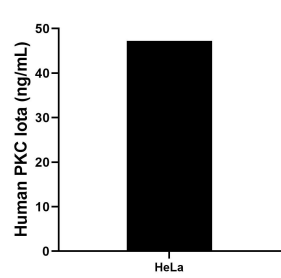
Selected Validation Data



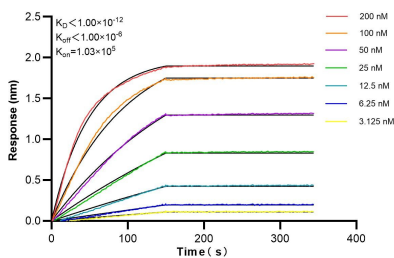
Various lysates were subjected to SDS PAGE followed by western blot with 85733-2-RR (PRKCI antibody) at dilution of 1:10000 incubated at room temperature for 1.5 hours. This data was developed using the same antibody clone with 85733-2-PBS in a different storage buffer formulation.



Sandwich ELISA standard curve of MP02074-3, Human PKC Iota Recombinant Matched Antibody Pair - PBS only. 85733-6-PBS was coated to a plate as the capture antibody and incubated with serial dilutions of standard Ag4990. 85733-2-PBS was HRP conjugated as the detection antibody. Range: 0.313-20 ng/mL



The mean PKC Iota concentration was determined to be 47.20 ng/mL in HeLa cell extract based on a 3.0 mg/mL extract load.



Biolayer interferometry (BLI) kinetic assays of 85733-2-RR against Human PKC Iota were performed. The affinity constant is below 1 pM.