

For Research Use Only

C1s Recombinant monoclonal antibody, PBS Only

Catalog Number: 85736-6-PBS



Basic Information

Catalog Number: 85736-6-PBS	GenBank Accession Number: BC056903	Purification Method: Protein A purification
Size: 100ug , Concentration: 1 mg/ml by Nanodrop;	GeneID (NCBI): 716	CloneNo.: 250031G3
Source: Rabbit	UNIPROT ID: P09871	
Isotype: IgG	Full Name: complement component 1, s subcomponent	
Immunogen Catalog Number: AG5977	Calculated MW: 77 kDa	
	Observed MW: 88 kDa	

Applications

Tested Applications:
WB, Indirect ELISA

Species Specificity:
human

Background Information

The first component of complement is a calcium-dependent complex of the 3 subcomponents C1q, C1r, and C1s. The serine protease subunits C1r and C1s form a Ca²⁺-dependent C1s-C1r-C1r-C1s tetramer. C1r activates C1s so that it can, in turn, activate C2 and C4. C1s is a glycoprotein of approximately 88 kDa, which is activated by cleavage into an A chain and a B chain.

Storage

Storage:
Store at -80°C.

Storage Buffer:
PBS only, pH7.3

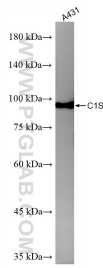
For technical support and original validation data for this product please contact:

T: 1 (888) 4PTGLAB (1-888-478-4522) (toll free
in USA), or 1(312) 455-8498 (outside USA)

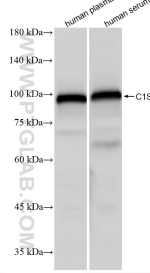
E: proteintech@ptglab.com
W: ptglab.com

This product is exclusively available under Proteintech Group brand and is not available to purchase from any other manufacturer.

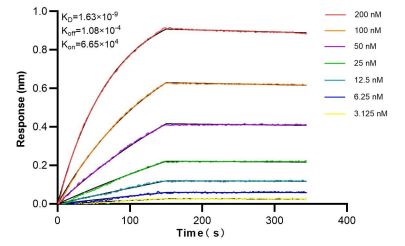
Selected Validation Data



A431 cells were subjected to SDS PAGE followed by western blot with 85736-6-RR (C1S antibody) at dilution of 1:10000 incubated at room temperature for 1.5 hours. This data was developed using the same antibody clone with 85736-6-PBS in a different storage buffer formulation.



Various lysates were subjected to SDS PAGE followed by western blot with 85736-6-RR (C1S antibody) at dilution of 1:10000 incubated at room temperature for 1.5 hours. This data was developed using the same antibody clone with 85736-6-PBS in a different storage buffer formulation.



Bi-layer interferometry (BLI) kinetic assays of 85736-6-RR against Human C1S were performed. The affinity constant is 1.63 nM.