

For Research Use Only

C1s Recombinant monoclonal antibody

Catalog Number: 85736-6-RR



Basic Information

Catalog Number: 85736-6-RR	GenBank Accession Number: BC056903	Purification Method: Protein A purification
Size: 100ul , Concentration: 1000 µg/ml by Nanodrop;	GeneID (NCBI): 716	CloneNo.: 250031G3
Source: Rabbit	UNIPROT ID: P09871	Recommended Dilutions: WB: 1:5000-1:50000
Isotype: IgG	Full Name: complement component 1, s subcomponent	
Immunogen Catalog Number: AG5977	Calculated MW: 77 kDa	
	Observed MW: 88 kDa	

Applications

Tested Applications: WB, ELISA	Positive Controls: WB : A431 cells, human plasma, human serum
Species Specificity: human	

Background Information

The first component of complement is a calcium-dependent complex of the 3 subcomponents C1q, C1r, and C1s. The serine protease subunits C1r and C1s form a Ca²⁺-dependent C1s-C1r-C1r-C1s tetramer. C1r activates C1s so that it can, in turn, activate C2 and C4. C1s is a glycoprotein of approximately 88 kDa, which is activated by cleavage into an A chain and a B chain.

Storage

Storage:
Store at -20°C. Stable for one year after shipment.
Storage Buffer:
PBS with 0.02% sodium azide and 50% glycerol, pH7.3
Aliquoting is unnecessary for -20°C storage

*** 20ul sizes contain 0.1% BSA

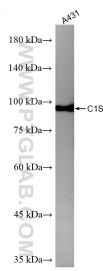
For technical support and original validation data for this product please contact:

T: 1 (888) 4PTGLAB (1-888-478-4522) (toll free in USA), or 1(312) 455-8498 (outside USA)

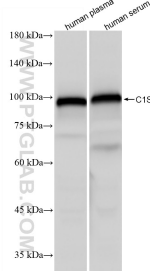
E: proteintech@ptglab.com
W: ptglab.com

This product is exclusively available under Proteintech Group brand and is not available to purchase from any other manufacturer.

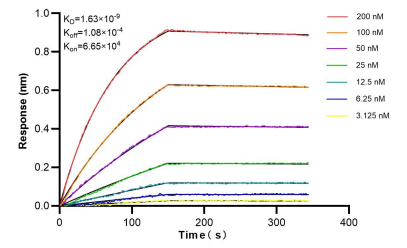
Selected Validation Data



A431 cells were subjected to SDS PAGE followed by western blot with 85736-6-RR (C1S antibody) at dilution of 1:10000 incubated at room temperature for 1.5 hours.



Various lysates were subjected to SDS PAGE followed by western blot with 85736-6-RR (C1S antibody) at dilution of 1:10000 incubated at room temperature for 1.5 hours.



Biolayer interferometry (BLI) kinetic assays of 85736-6-RR against Human C1S were performed. The affinity constant is 1.63 nM.