

For Research Use Only

KLK10 Recombinant antibody, PBS Only (Capture)

Catalog Number: 85741-4-PBS



Basic Information

Catalog Number: 85741-4-PBS	GenBank Accession Number: NM_002776.4	Purification Method: Protein A purification
Size: 100ug , Concentration: 1 mg/ml by Nanodrop;	GeneID (NCBI): 5655	CloneNo.: 242746F1
Source: Rabbit	UNIPROT ID: O43240	
Isotype: IgG	Full Name: kallikrein-related peptidase 10	
Immunogen Catalog Number: EG3132	Calculated MW: 30 kDa	

Applications

Tested Applications:
Cytometric bead array, Sandwich ELISA, Indirect ELISA, Sample test

Species Specificity:
human

Product Information

85741-4-PBS targets KLK10 as part of a matched antibody pair:

MP02112-2: 85741-4-PBS capture and 85741-3-PBS detection (validated in Cytometric bead array)

MP02112-3: 85741-4-PBS capture and 85741-6-PBS detection (validated in Sandwich ELISA)

Unconjugated rabbit recombinant monoclonal antibody in PBS only (BSA and azide free) storage buffer at a concentration of 1 mg/mL, ready for conjugation. Created using Proteintech's proprietary in-house recombinant technology. Recombinant production enables unrivalled batch-to-batch consistency, easy scale-up, and future security of supply.

This conjugation ready format makes antibodies ideal for use in many applications including: ELISAs, multiplex assays requiring matched pairs, mass cytometry, and multiplex imaging applications. Antibody use should be optimized by the end user for each application and assay.

Storage

Storage:
Store at -80°C.
Storage Buffer:
PBS only, pH7.3

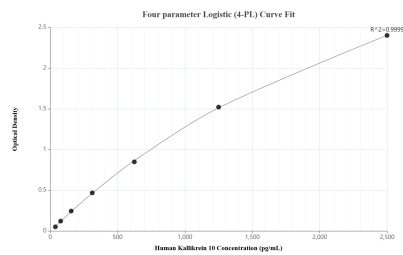
For technical support and original validation data for this product please contact:

T: 1 (888) 4PTGLAB (1-888-478-4522) (toll free in USA), or 1(312) 455-8498 (outside USA)

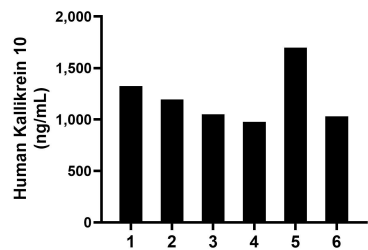
E: proteintech@ptglab.com
W: ptglab.com

This product is exclusively available under Proteintech Group brand and is not available to purchase from any other manufacturer.

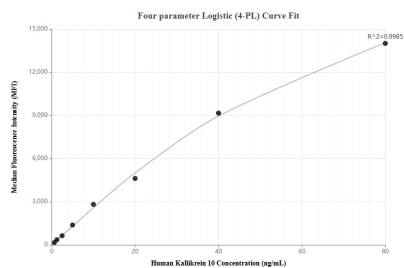
Selected Validation Data



Sandwich ELISA standard curve of MP02112-3, Human Kallikrein 10 Recombinant Matched Antibody Pair - PBS only. 85741-4-PBS was coated to a plate as the capture antibody and incubated with serial dilutions of standard Eg3132. 85741-6-PBS was HRP conjugated as the detection antibody. Range: 39.1-2500 pg/mL.



Serum of six individual healthy human donors was measured. The Kallikrein 10 concentration of detected samples was determined to be 1,212.5 pg/mL with a range of 977.3-1,697.0 pg/mL.



Cytometric bead array standard curve of MP02112-2, Kallikrein 10 Recombinant Matched Antibody Pair, PBS Only. Capture antibody: 85741-4-PBS. Detection antibody: 85741-3-PBS. Standard: Eg3132. Range: 0.625-80 ng/mL.