

For Research Use Only

# PELO Recombinant antibody, PBS Only (Capture)

Catalog Number: 85743-1-PBS



## Basic Information

<b>Catalog Number:</b> 85743-1-PBS	<b>GenBank Accession Number:</b> BC005889	<b>Purification Method:</b> Protein A purification
<b>Size:</b> 100ug , Concentration: 1 mg/ml by Nanodrop;	<b>GeneID (NCBI):</b> 53918	<b>CloneNo.:</b> 243137F4
<b>Source:</b> Rabbit	<b>UNIPROT ID:</b> Q9BRX2	
<b>Isotype:</b> IgG	<b>Full Name:</b> pelota homolog (Drosophila)	
<b>Immunogen Catalog Number:</b> AG0873	<b>Calculated MW:</b> 43 kDa	
	<b>Observed MW:</b> 43-45 kDa	

## Applications

**Tested Applications:**  
WB, IF/ICC, Cytometric bead array, Indirect ELISA

**Species Specificity:**  
human

## Product Information

85743-1-PBS targets PELO as part of a matched antibody pair:

MP02111-1: 85743-1-PBS capture and 85743-2-PBS detection (validated in Cytometric bead array)

Unconjugated rabbit recombinant monoclonal antibody in PBS only (BSA and azide free) storage buffer at a concentration of 1 mg/mL, ready for conjugation. Created using Proteintech's proprietary in-house recombinant technology. Recombinant production enables unrivalled batch-to-batch consistency, easy scale-up, and future security of supply.

This conjugation ready format makes antibodies ideal for use in many applications including: ELISAs, multiplex assays requiring matched pairs, mass cytometry, and multiplex imaging applications. Antibody use should be optimized by the end user for each application and assay.

## Background Information

The Peló gene was originally identified in a mutagenesis screen for spermatogenesis-specific genes of *Drosophila melanogaster*. The PELO is required for the meiotic division during the G2/M transition, and functions in recognizing stalled ribosomes and triggering endonucleolytic cleavage of the mRNA, a mechanism to release non-functional ribosomes and degrade damaged mRNAs [PMID:12556505]. It may participate in the machinery of protein synthesis or in the regulation of mRNA translation [PMID:9584085].

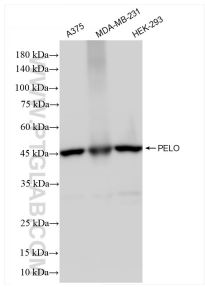
## Storage

**Storage:**  
Store at -80°C.  
**Storage Buffer:**  
PBS only, pH7.3

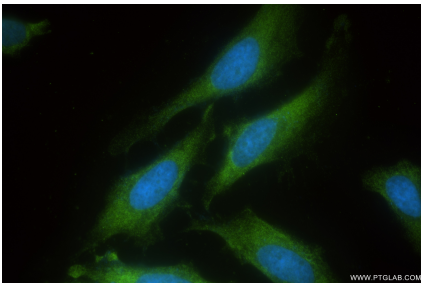
For technical support and original validation data for this product please contact:  
T: 1 (888) 4PTGLAB (1-888-478-4522) (toll free in USA), or 1(312) 455-8498 (outside USA)  
E: proteintech@ptglab.com  
W: ptglab.com

This product is exclusively available under Proteintech Group brand and is not available to purchase from any other manufacturer.

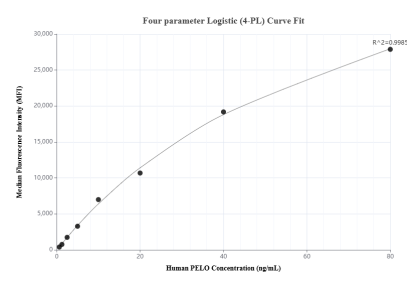
Selected Validation Data



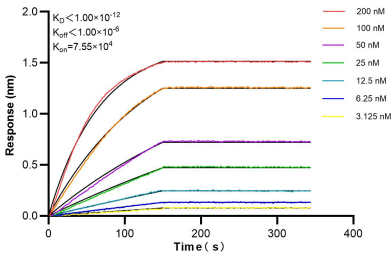
Various lysates were subjected to SDS PAGE followed by western blot with 85743-1-RR (PELO antibody) at dilution of 1:10000 incubated at room temperature for 1.5 hours. This data was developed using the same antibody clone with 85743-1-PBS in a different storage buffer formulation.



Immunofluorescent analysis of (-20°C Methanol) fixed HeLa cells using PELO antibody (85743-1-RR, Clone: 243137F4 ) at dilution of 1:400 and CoraLite®488-Conjugated Goat Anti-Rabbit IgG(H+L) (SA00013-2). This data was developed using the same antibody clone with 85743-1-PBS in a different storage buffer formulation.



Cytometric bead array standard curve of MP02111-1, PELO Recombinant Matched Antibody Pair, PBS Only. Capture antibody: 85743-1-PBS. Detection antibody: 85743-2-PBS. Standard: Ag0873. Range: 0.625-80 ng/mL.



Biolayer interferometry (BLI) kinetic assays of 85743-1-RR against Human PELO were performed. The affinity constant is below 1 pM.