

For Research Use Only

# SMR3B Recombinant antibody, PBS Only (Capture/Detector)

Catalog Number: 85745-2-PBS



## Basic Information

<b>Catalog Number:</b> 85745-2-PBS	<b>GenBank Accession Number:</b> NM_006685.4	<b>Purification Method:</b> Protein A purification
<b>Size:</b> 100ug , Concentration: 1 mg/ml by Nanodrop;	<b>GeneID (NCBI):</b> 10879	<b>CloneNo.:</b> 242868C8
<b>Source:</b> Rabbit	<b>UNIPROT ID:</b> P02814	
<b>Isotype:</b> IgG	<b>Full Name:</b> submaxillary gland androgen regulated protein 3B	
<b>Immunogen Catalog Number:</b> EG3081	<b>Calculated MW:</b> 8 kDa	

## Applications

**Tested Applications:**  
Cytometric bead array, Sandwich ELISA, Indirect ELISA, Sample test

**Species Specificity:**  
human

## Product Information

85745-2-PBS targets SMR3B as part of a matched antibody pair:

MP02114-1: 85745-3-PBS capture and 85745-2-PBS detection (validated in Cytometric bead array, Sandwich ELISA)

MP02114-2: 85745-2-PBS capture and 85745-1-PBS detection (validated in Cytometric bead array)

Unconjugated rabbit recombinant monoclonal antibody in PBS only (BSA and azide free) storage buffer at a concentration of 1 mg/mL, ready for conjugation. Created using Proteintech's proprietary in-house recombinant technology. Recombinant production enables unrivalled batch-to-batch consistency, easy scale-up, and future security of supply.

This conjugation ready format makes antibodies ideal for use in many applications including: ELISAs, multiplex assays requiring matched pairs, mass cytometry, and multiplex imaging applications. Antibody use should be optimized by the end user for each application and assay.

## Storage

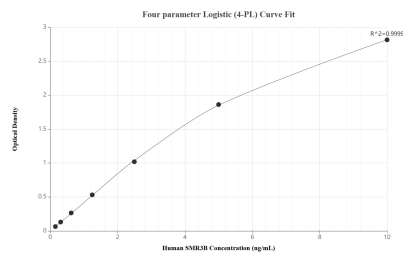
**Storage:**  
Store at -80°C.

**Storage Buffer:**  
PBS only, pH7.3

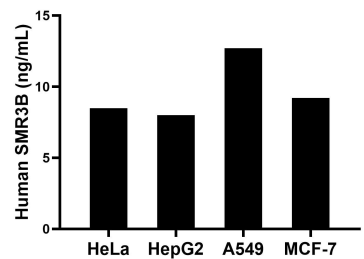
For technical support and original validation data for this product please contact:  
T: 1 (888) 4PTGLAB (1-888-478-4522) (toll free in USA), or 1(312) 455-8498 (outside USA)  
E: [proteintech@ptglab.com](mailto:proteintech@ptglab.com)  
W: [ptglab.com](http://ptglab.com)

This product is exclusively available under Proteintech Group brand and is not available to purchase from any other manufacturer.

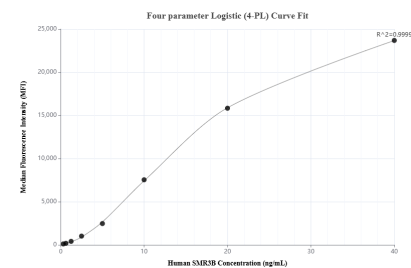
## Selected Validation Data



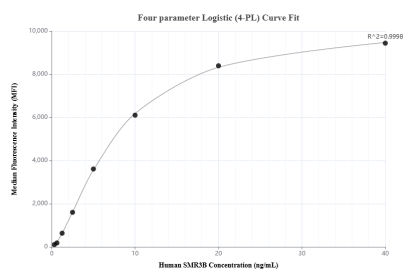
Sandwich ELISA standard curve of MP02114-1, Human SMR3B Recombinant Matched Antibody Pair - PBS only. 85745-3-PBS was coated to a plate as the capture antibody and incubated with serial dilutions of standard Eg3081. 85745-2-PBS was HRP conjugated as the detection antibody. Range: 0.156-10 ng/mL.



The mean SMR3B concentration was determined to be 8.50 ng/mL in HeLa cell extract based on a 1.30 mg/mL extract load, 8.00 ng/mL in HepG2 cell extract based on a 0.90 mg/mL extract load, 12.70 ng/mL in A549 cell extract based on a 2.40 mg/mL extract load and 9.20 ng/mL in MCF-7 cell extract based on a 1.20 mg/mL extract load.



Cytometric bead array standard curve of MP02114-1, SMR3B Recombinant Matched Antibody Pair, PBS Only. Capture antibody: 85745-3-PBS. Detection antibody: 85745-2-PBS. Standard: Eg3081. Range: 0.313-40 ng/mL.



Cytometric bead array standard curve of MP02114-2, SMR3B Recombinant Matched Antibody Pair, PBS Only. Capture antibody: 85745-2-PBS. Detection antibody: 85745-1-PBS. Standard: Eg3081. Range: 0.313-40 ng/mL.