

For Research Use Only

SMR3B Recombinant monoclonal antibody

Catalog Number: 85745-3-RR



Basic Information

Catalog Number: 85745-3-RR	GenBank Accession Number: NM_006685.4	Purification Method: Protein A purification
Size: 100ul , Concentration: 1000 µg/ml by Nanodrop;	GeneID (NCBI): 10879	CloneNo.: 242868D3
Source: Rabbit	UNIPROT ID: P02814	Recommended Dilutions: WB: 1:500-1:2000
Isotype: IgG	Full Name: submaxillary gland androgen regulated protein 3B	
Immunogen Catalog Number: EG3081	Calculated MW: 8 kDa	
	Observed MW: 8 kDa	

Applications

Tested Applications: WB, ELISA	Positive Controls: WB : human saliva, human saliva tissue
Species Specificity: human	

Background Information

SMR3B is an androgen-regulated secreted PRP-family peptide produced primarily in the submandibular and sublingual glands. Released into saliva, it contributes to lubrication, oral defense, and glandular homeostasis. Highly tissue-specific, SMR3B serves as a marker of salivary gland function and is altered in xerostomia, Sjögren's syndrome, and head-and-neck cancers, highlighting its relevance in secretory physiology and disease.

Storage

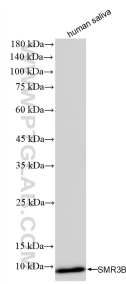
Storage:
Store at -20°C. Stable for one year after shipment.
Storage Buffer:
PBS with 0.02% sodium azide and 50% glycerol, pH7.3
Aliquoting is unnecessary for -20°C storage

*** 20ul sizes contain 0.1% BSA

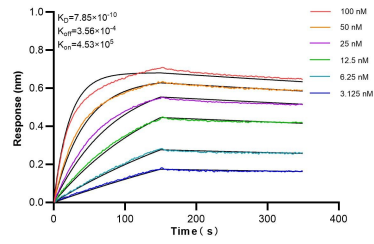
For technical support and original validation data for this product please contact:
T: 1 (888) 4PTGLAB (1-888-478-4522) (toll free in USA), or 1(312) 455-8498 (outside USA)
E: proteintech@ptglab.com
W: ptglab.com

This product is exclusively available under Proteintech Group brand and is not available to purchase from any other manufacturer.

Selected Validation Data



human saliva were subjected to SDS PAGE followed by western blot with 85745-3-RR (SMR3B antibody) at dilution of 1:1000 incubated at room temperature for 1.5 hours.



Biolayer interferometry (BLI) kinetic assays of 85745-3-RR against Human SMR3B were performed. The affinity constant is 0.785 nM.