

For Research Use Only

KCC2/SLC12A5-Specific Recombinant antibody, PBS Only

Catalog Number: 85751-1-PBS



Basic Information

Catalog Number:

85751-1-PBS

Size:

100ug , Concentration: 1 mg/ml by Nanodrop;

Source:

Rabbit

Isotype:

IgG

GenBank Accession Number:

NM_020708

GeneID (NCBI):

57468

UNIPROT ID:

Q9H2X9

Full Name:

solute carrier family 12 (potassium-chloride transporter), member 5

Calculated MW:

126 kDa

Observed MW:

130-150 kDa

Purification Method:

Protein A purification

CloneNo.:

243141H8

Applications

Tested Applications:

WB, Indirect ELISA

Species Specificity:

human, mouse, pig

Storage

Storage:

Store at -80°C.

Storage Buffer:

PBS only, pH7.3

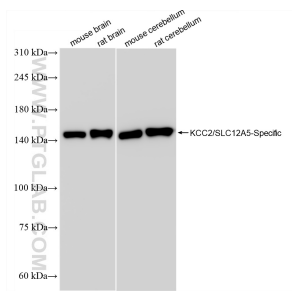
For technical support and original validation data for this product please contact:

T: 1 (888) 4PTGLAB (1-888-478-4522) (toll free in USA), or 1(312) 455-8498 (outside USA)

E: proteintech@ptglab.com
W: ptglab.com

This product is exclusively available under Proteintech Group brand and is not available to purchase from any other manufacturer.

Selected Validation Data



Various lysates were subjected to SDS PAGE followed by western blot with 85751-1-RR (KCC2/SLC12A5-Specific antibody) at dilution of 1:10000 incubated at room temperature for 1.5 hours. This data was developed using the same antibody clone with 85751-1-PBS in a different storage buffer formulation.