

For Research Use Only

KCC2/SLC12A5-Specific Recombinant antibody

Catalog Number: 85751-1-RR



Basic Information

Catalog Number:

85751-1-RR

Size:

100ul , Concentration: 1000 µg/ml by Nanodrop;

Source:

Rabbit

Isotype:

IgG

GenBank Accession Number:

NM_020708

GeneID (NCBI):

57468

UNIPROT ID:

Q9H2X9

Full Name:

solute carrier family 12 (potassium-chloride transporter), member 5

Calculated MW:

126 kDa

Observed MW:

130-150 kDa

Purification Method:

Protein A purification

CloneNo.:

243141H8

Recommended Dilutions:

WB 1:5000-1:50000

Applications

Tested Applications:

WB, ELISA

Species Specificity:

human, mouse, pig

Positive Controls:

WB : mouse brain tissue, rat brain tissue, mouse cerebellum tissue, rat cerebellum

Storage

Storage:

Store at -20°C. Stable for one year after shipment.

Storage Buffer:

PBS with 0.02% sodium azide and 50% glycerol, pH7.3

Aliquoting is unnecessary for -20°C storage

*** 20ul sizes contain 0.1% BSA

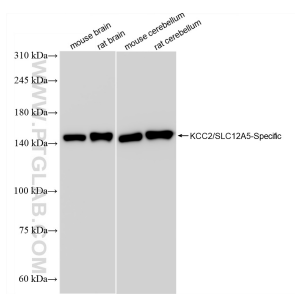
For technical support and original validation data for this product please contact:

T: 1 (888) 4PTGLAB (1-888-478-4522) (toll free in USA), or 1(312) 455-8498 (outside USA)

E: proteintech@ptglab.com
W: ptglab.com

This product is exclusively available under Proteintech Group brand and is not available to purchase from any other manufacturer.

Selected Validation Data



Various lysates were subjected to SDS PAGE followed by western blot with 85751-1-RR (KCC2/SLC12A5-Specific antibody) at dilution of 1:10000 incubated at room temperature for 1.5 hours.