

For Research Use Only

TAP1 Recombinant antibody, PBS Only (Capture)

Catalog Number: 85766-1-PBS



Basic Information

Catalog Number: 85766-1-PBS	GenBank Accession Number: BC014081	Purification Method: Protein A purification
Size: 100ug , Concentration: 1 mg/ml by Nanodrop;	GeneID (NCBI): 6890	CloneNo.: 250037D7
Source: Rabbit	UNIPROT ID: Q03518	
Isotype: IgG	Full Name: transporter 1, ATP-binding cassette, sub-family B (MDR/TAP)	
Immunogen Catalog Number: AG1619	Calculated MW: 81 kDa	

Applications

Tested Applications:
Cytometric bead array, Sandwich ELISA, Indirect ELISA, Sample test

Species Specificity:
human

Product Information

85766-1-PBS targets TAP1 as part of a matched antibody pair:

MP02080-1: 85766-1-PBS capture and 85766-3-PBS detection (validated in Cytometric bead array, Sandwich ELISA)

Unconjugated rabbit recombinant monoclonal antibody in PBS only (BSA and azide free) storage buffer at a concentration of 1 mg/mL, ready for conjugation. Created using Proteintech's proprietary in-house recombinant technology. Recombinant production enables unrivalled batch-to-batch consistency, easy scale-up, and future security of supply.

This conjugation ready format makes antibodies ideal for use in many applications including: ELISAs, multiplex assays requiring matched pairs, mass cytometry, and multiplex imaging applications. Antibody use should be optimized by the end user for each application and assay.

Storage

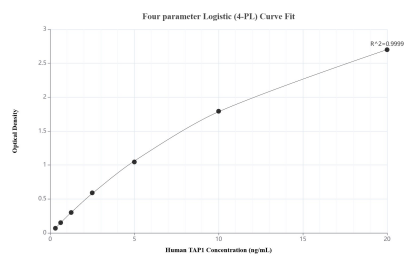
Storage:
Store at -80°C.

Storage Buffer:
PBS only, pH7.3

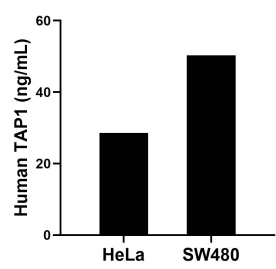
For technical support and original validation data for this product please contact:
T: 1 (888) 4PTGLAB (1-888-478-4522) (toll free in USA), or 1(312) 455-8498 (outside USA)
E: proteintech@ptglab.com
W: ptglab.com

This product is exclusively available under Proteintech Group brand and is not available to purchase from any other manufacturer.

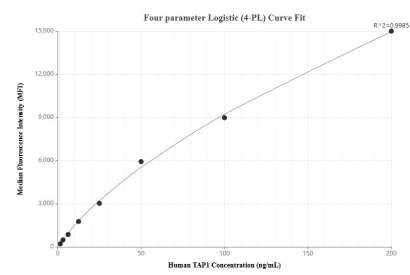
Selected Validation Data



Sandwich ELISA standard curve of MP02080-1, Human TAP1 Recombinant Matched Antibody Pair - PBS only. 85766-1-PBS was coated to a plate as the capture antibody and incubated with serial dilutions of standard Ag1619. 85766-3-PBS was HRP conjugated as the detection antibody. Range: 0.313-20 ng/mL.



The mean TAP1 concentration was determined to be 28.62 ng/mL in HeLa cell extract based on a 2.10 mg/mL extract load and 50.30 ng/mL in SW480 cell extract based on a 1.50 mg/mL extract load.



Cytometric bead array standard curve of MP02080-1, TAP1 Recombinant Matched Antibody Pair, PBS Only. Capture antibody: 85766-1-PBS. Detection antibody: 85766-3-PBS. Standard: Ag1619. Range: 1.563-200 ng/mL.