

For Research Use Only

TOMM40 Recombinant antibody, PBS Only

Catalog Number: 85773-4-PBS



Basic Information

Catalog Number: 85773-4-PBS	GenBank Accession Number: BC017224	Purification Method: Protein A purification
Size: 100ug , Concentration: 1 mg/ml by Nanodrop;	GeneID (NCBI): 10452	CloneNo.: 250010E12
Source: Rabbit	UNIPROT ID: O96008	
Isotype: IgG	Full Name: translocase of outer mitochondrial membrane 40 homolog (yeast)	
Immunogen Catalog Number: AG13065	Calculated MW: 38 kDa	
	Observed MW: 38 kDa	

Applications

Tested Applications:
WB, IF/ICC, Indirect ELISA

Species Specificity:
human, mouse, rat

Background Information

The translocase of outer mitochondria membrane 40 (TOMM40, also known as TOM40), located in the center of the TOM complex, is a channel-forming subunit of translocase. It can facilitate the fluid movement of preproteins into the mitochondria by associating with TOMM20. TOMM40 plays a role in the assembly of the mitochondrial membrane respiratory chain NADH dehydrogenase (Complex I) by forming a complex with BCAP31 and mediating the translocation of Complex I components from the cytosol to the mitochondria (PMID: 31206022). TOMM40 has been reported to be associated with late-onset neurodegenerative diseases such as Alzheimer's disease and Parkinson's disease.

Storage

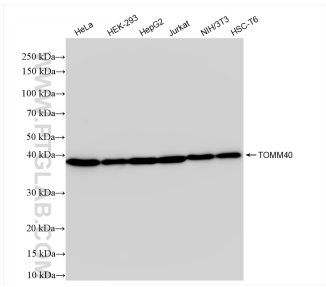
Storage:
Store at -80°C.

Storage Buffer:
PBS only, pH7.3

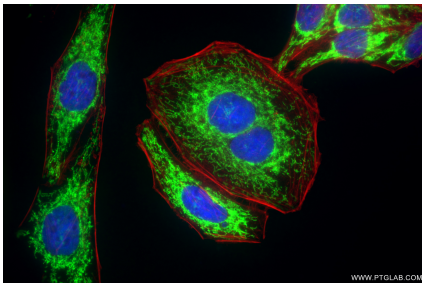
For technical support and original validation data for this product please contact:
T: 1 (888) 4PTGLAB (1-888-478-4522) (toll free in USA), or 1(312) 455-8498 (outside USA)
E: proteintech@ptglab.com
W: ptglab.com

This product is exclusively available under Proteintech Group brand and is not available to purchase from any other manufacturer.

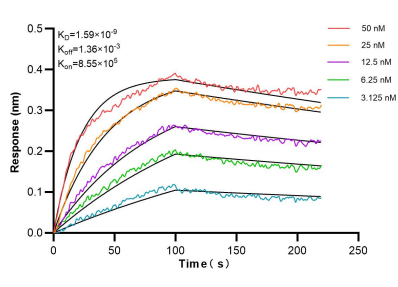
Selected Validation Data



Various lysates were subjected to SDS PAGE followed by western blot with 85773-4-RR (TOMM40 antibody) at dilution of 1:10000 incubated at room temperature for 1.5 hours. This data was developed using the same antibody clone with 85773-4-PBS in a different storage buffer formulation.



Immunofluorescent analysis of (4% PFA) fixed HepG2 cells using TOMM40 antibody (85773-4-RR, Clone: 250010E12) at dilution of 1:1000 and CoraLite® 488-Conjugated Goat Anti-Rabbit IgG(H+L) (SA00013-2), CL594-Phalloidin (red). This data was developed using the same antibody clone with 85773-4-PBS in a different storage buffer formulation.



Biolayer interferometry (BLI) kinetic assays of 85773-4-RR against Human TOMM40 were performed. The affinity constant is 1.59 nM.