

For Research Use Only

# Mesothelin Recombinant antibody

Catalog Number: 85774-4-RR



## Basic Information

Catalog Number:	GenBank Accession Number:	Purification Method:
85774-4-RR	NM_018857.1	Protein A purification
Size:	GeneID (NCBI):	CloneNo.:
100ul , Concentration: 1000 µg/ml by Nanodrop;	56047	243099D4
Source:	UNIPROT ID:	Recommended Dilutions:
Rabbit	Q61468	WB: 1:2000-1:10000
Isotype:	Full Name:	
IgG	mesothelin	
Immunogen Catalog Number:	Calculated MW:	
EG2864	69 kDa	
	Observed MW:	
	46 kDa	

## Applications

Tested Applications:	Positive Controls:
WB, ELISA	WB : mouse serum,
Species Specificity:	
mouse	

## Background Information

Mesothelin (MSLN) is a cell surface glycoprotein that was discovered in 1992 by Kai Chang, Ira Pastan, and Mark Willingham at the National Cancer Institute in Bethesda, MD. It is synthesized as a 69-kDa precursor protein, which is cleaved to form two proteins: a membrane-bound MSLN and a soluble megakaryocyte potentiating factor (MPF). MSLN is overexpressed in various tumor types, including mesothelioma, ovarian cancer, pancreatic adenocarcinoma, gastric cancer, and triple-negative breast cancer (TNBC). However, it is expressed at low levels in normal tissues, primarily on the mesothelial cells lining the pleura, pericardium, and peritoneum. (PMID: 37869242)

## Storage

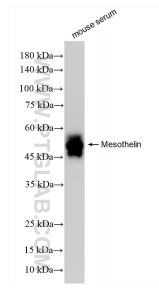
**Storage:**  
Store at -20°C. Stable for one year after shipment.  
**Storage Buffer:**  
PBS with 0.02% sodium azide and 50% glycerol, pH7.3  
Aliquoting is unnecessary for -20°C storage

\*\*\* 20ul sizes contain 0.1% BSA

For technical support and original validation data for this product please contact:  
T: 1 (888) 4PTGLAB (1-888-478-4522) (toll free in USA), or 1(312) 455-8498 (outside USA)  
E: [proteintech@ptglab.com](mailto:proteintech@ptglab.com)  
W: [ptglab.com](http://ptglab.com)

This product is exclusively available under Proteintech Group brand and is not available to purchase from any other manufacturer.

## Selected Validation Data



mouse serum were subjected to SDS PAGE followed by western blot with 85774-4-RR (Msln antibody) at dilution of 1:5000 incubated at room temperature for 1.5 hours.