

For Research Use Only

# C4b Alpha Chain/C4b-B/C4d-B Recombinant monoclonal antibody, PBS Only



Catalog Number: 85782-2-PBS

## Basic Information

<b>Catalog Number:</b> 85782-2-PBS	<b>GenBank Accession Number:</b> NM_000592	<b>Purification Method:</b> Protein A purification
<b>Size:</b> 100ug, Concentration: 1 mg/ml by Nanodrop;	<b>GeneID (NCBI):</b> 721	<b>CloneNo.:</b> 250030C6
<b>Source:</b> Rabbit	<b>UNIPROT ID:</b> POC0L5	
<b>Isotype:</b> IgG	<b>Full Name:</b> complement component 4B (Chido blood group)	
	<b>Calculated MW:</b> 193 kDa	
	<b>Observed MW:</b> 95 kDa	

## Applications

**Tested Applications:**  
WB, IF/ICC, Indirect ELISA

**Species Specificity:**  
human

## Background Information

Complement C4, a component of the classical complement pathway, has an important role in innate immune function. C4 protein is expressed as a single-chain precursor, which is proteolytically cleaved into a trimer of alpha, beta, and gamma chains (molecular weights 95, 78, and 31 kDa) prior to secretion. The alpha chain is cleaved to release C4 anaphylatoxin, an antimicrobial peptide and a mediator of local inflammation. This antibody raised against 1116-1128aa of human C4b protein can recognize C4b precursor, C4b alpha chain, C4b-B, and C4d-B.

## Storage

**Storage:**  
Store at -80°C.

**Storage Buffer:**  
PBS only, pH7.3

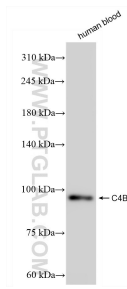
For technical support and original validation data for this product please contact:

T: 1 (888) 4PTGLAB (1-888-478-4522) (toll free  
in USA), or 1(312) 455-8498 (outside USA)

E: [proteintech@ptglab.com](mailto:proteintech@ptglab.com)  
W: [ptglab.com](http://ptglab.com)

**This product is exclusively available under Proteintech Group brand and is not available to purchase from any other manufacturer.**

## Selected Validation Data



Human blood was subjected to SDS PAGE followed by western blot with 85782-2-RR (C4B antibody) at dilution of 1:10000 incubated at room temperature for 1.5 hours. This data was developed using the same antibody clone with 85782-2-PBS in a different storage buffer formulation.

Immunofluorescent analysis of (-20°C Methanol) fixed HepG2 cells using C4B antibody (85782-2-RR, Clone: 250030C6) at dilution of 1:400 and CoraLite® 488-Conjugated Goat Anti-Rabbit IgG(H+L) (SA00013-2). This data was developed using the same antibody clone with 85782-2-PBS in a different storage buffer formulation.