

For Research Use Only

C4b Alpha Chain/C4b-B/C4d-B Recombinant monoclonal antibody

Catalog Number:85782-2-RR



Basic Information

Catalog Number: 85782-2-RR	GenBank Accession Number: NM_000592	Purification Method: Protein A purification
Size: 100ul , Concentration: 1000 µg/ml by Nanodrop;	GeneID (NCBI): 721	CloneNo.: 250030C6
Source: Rabbit	UNIPROT ID: P0C0L5	Recommended Dilutions: WB: 1:5000-1:50000 IF/ICC: 1:200-1:800
Isotype: IgG	Full Name: complement component 4B (Chido blood group)	
	Calculated MW: 193 kDa	
	Observed MW: 95 kDa	

Applications

Tested Applications: WB, IF/ICC, ELISA	Positive Controls:
Species Specificity: human	WB : human blood, IF/ICC : HepG2 cells,

Background Information

Complement C4, a component of the classical complement pathway, has an important role in innate immune function. C4 protein is expressed as a single-chain precursor, which is proteolytically cleaved into a trimer of alpha, beta, and gamma chains (molecular weights 95, 78, and 31 kDa) prior to secretion. The alpha chain is cleaved to release C4 anaphylatoxin, an antimicrobial peptide and a mediator of local inflammation. This antibody raised against 1116-1128aa of human C4b protein can recognize C4b precursor, C4b alpha chain, C4b-B, and C4d-B.

Storage

Storage:
Store at -20°C. Stable for one year after shipment.
Storage Buffer:
PBS with 0.02% sodium azide and 50% glycerol, pH7.3
Aliquoting is unnecessary for -20°C storage

*** 20ul sizes contain 0.1% BSA

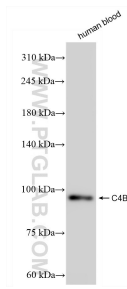
For technical support and original validation data for this product please contact:

T: 1 (888) 4PTGLAB (1-888-478-4522) (toll free in USA), or 1(312) 455-8498 (outside USA)

E: proteintech@ptglab.com
W: ptglab.com

This product is exclusively available under Proteintech Group brand and is not available to purchase from any other manufacturer.

Selected Validation Data



Immunofluorescent analysis of (-20°C Methanol) fixed HepG2 cells using C4B antibody (85782-2-RR, Clone: 250030C6) at dilution of 1:400 and CoraLite® 488-Conjugated Goat Anti-Rabbit IgG(H+L) (SA00013-2).

Human blood was subjected to SDS PAGE followed by western blot with 85782-2-RR (C4B antibody) at dilution of 1:10000 incubated at room temperature for 1.5 hours.