

For Research Use Only

CRHR2 Recombinant antibody

Catalog Number: 85785-1-RR



Basic Information

Catalog Number:

85785-1-RR

Size:

100ul , Concentration: 1000 µg/ml by Nanodrop;

Source:

Rabbit

Isotype:

IgG

GenBank Accession Number:

NM_001883

GeneID (NCBI):

1395

UNIPROT ID:

Q13324

Full Name:

corticotropin releasing hormone receptor 2

Calculated MW:

48 kDa

Observed MW:

48 kDa

Purification Method:

Protein A purification

CloneNo.:

250043F4

Recommended Dilutions:

WB: 1:5000-1:50000

Applications

Tested Applications:

WB, ELISA

Species Specificity:

human, mouse, rat

Positive Controls:

WB : HepG2 cells, HL-60 cells, mouse skeletal muscle tissue, rat skeletal muscle tissue, HeLa cells, K-562 cells

Background Information

CRHR2 is a receptor for corticotropin-releasing factor (CRF) and belongs to the G-protein coupled receptor family. It shows high affinity for CRF and also binds to related peptides such as urocortin I, II, and III. This receptor is involved in mediating the endocrine, autonomic, and behavioral responses to stress and immune challenges.

Storage

Storage:

Store at -20°C. Stable for one year after shipment.

Storage Buffer:

PBS with 0.02% sodium azide and 50% glycerol, pH7.3

Aliquoting is unnecessary for -20°C storage

*** 20ul sizes contain 0.1% BSA

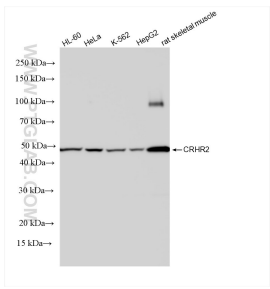
For technical support and original validation data for this product please contact:

T: 1 (888) 4PTGLAB (1-888-478-4522) (toll free in USA), or 1(312) 455-8498 (outside USA)

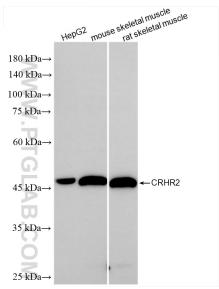
E: proteintech@ptglab.com
W: ptglab.com

This product is exclusively available under Proteintech Group brand and is not available to purchase from any other manufacturer.

Selected Validation Data



Various lysates were subjected to SDS PAGE followed by western blot with 85785-1-RR (CRHR2 antibody) at dilution of 1:5000 incubated at room temperature for 1.5 hours.



Various lysates were subjected to SDS PAGE followed by western blot with 85785-1-RR (CRHR2 antibody) at dilution of 1:10000 incubated at room temperature for 1.5 hours.