

For Research Use Only

# DCC Recombinant antibody, PBS Only (Capture/Detector)

Catalog Number: 85787-2-PBS



## Basic Information

|   |  |   |
|---|--|---|
| <b>Catalog Number:</b><br>85787-2-PBS                       | <b>GenBank Accession Number:</b><br>NM_005215.3      | <b>Purification Method:</b><br>Protein A purification |
| <b>Size:</b><br>100ug , Concentration: 1 mg/ml by Nanodrop; | <b>GeneID (NCBI):</b><br>1630                        | <b>CloneNo.:</b><br>250085G2                          |
| <b>Source:</b><br>Rabbit                                    | <b>UNIPROT ID:</b><br>P43146                         |   |
| <b>Isotype:</b><br>IgG                                      | <b>Full Name:</b><br>deleted in colorectal carcinoma |   |
| <b>Immunogen Catalog Number:</b><br>EG2937                  | <b>Calculated MW:</b><br>158 kDa                     |   |

## Applications

**Tested Applications:**  
Cytometric bead array, Sandwich ELISA, Indirect ELISA, Sample test

**Species Specificity:**  
human

## Product Information

85787-2-PBS targets DCC as part of a matched antibody pair:

MP02122-2: 85787-2-PBS capture and 85787-1-PBS detection (validated in Cytometric bead array)

MP02122-3: 85787-4-PBS capture and 85787-2-PBS detection (validated in Sandwich ELISA)

Unconjugated rabbit recombinant monoclonal antibody in PBS only (BSA and azide free) storage buffer at a concentration of 1 mg/mL, ready for conjugation. Created using Proteintech's proprietary in-house recombinant technology. Recombinant production enables unrivalled batch-to-batch consistency, easy scale-up, and future security of supply.

This conjugation ready format makes antibodies ideal for use in many applications including: ELISAs, multiplex assays requiring matched pairs, mass cytometry, and multiplex imaging applications. Antibody use should be optimized by the end user for each application and assay.

## Storage

**Storage:**  
Store at -80°C.  
**Storage Buffer:**  
PBS only, pH7.3

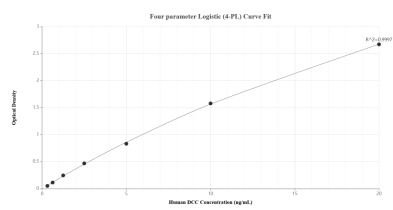
For technical support and original validation data for this product please contact:

T: 1 (888) 4PTGLAB (1-888-478-4522) (toll free in USA), or 1(312) 455-8498 (outside USA)

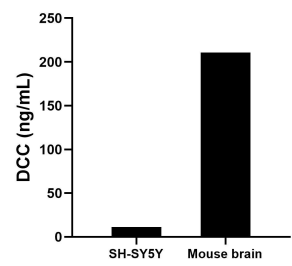
E: [proteintech@ptglab.com](mailto:proteintech@ptglab.com)  
W: [ptglab.com](http://ptglab.com)

This product is exclusively available under Proteintech Group brand and is not available to purchase from any other manufacturer.

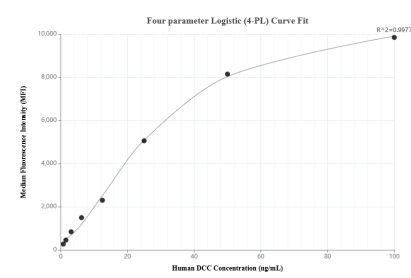
## Selected Validation Data



Sandwich ELISA standard curve of MP02122-3, Human DCC Recombinant Matched Antibody Pair - PBS only. 85787-4-PBS was coated to a plate as the capture antibody and incubated with serial dilutions of standard Eg2937. 85787-2-PBS was HRP conjugated as the detection antibody. Range: 0.313-20 ng/mL



The mean DCC concentration was determined to be 11.21 ng/mL in SH-SY5Y cell extract based on a 1.00 mg/mL extract load and 210.63 ng/mL in mouse brain tissue extract based on a 6.60 mg/mL extract load.



Cytometric bead array standard curve of MP02122-2, DCC Recombinant Matched Antibody Pair, PBS Only. Capture antibody: 85787-2-PBS. Detection antibody: 85787-1-PBS. Standard: Eg2937. Range: 0.781-100 ng/mL