

For Research Use Only

DCC Recombinant antibody, PBS Only (Capture)

Catalog Number: 85787-4-PBS



Basic Information

| | | |
|---|--|---|
| Catalog Number: 85787-4-PBS | GenBank Accession Number: NM_005215.3 | Purification Method: Protein A purification |
| Size: 100ug , Concentration: 1 mg/ml by Nanodrop; | GeneID (NCBI): 1630 | CloneNo.: 250085A11 |
| Source: Rabbit | UNIPROT ID: P43146 | |
| Isotype: IgG | Full Name: deleted in colorectal carcinoma | |
| Immunogen Catalog Number: EG2937 | Calculated MW: 158 kDa | |

Applications

Tested Applications:
Cytometric bead array, Sandwich ELISA, Indirect ELISA, Sample test

Species Specificity:
human

Product Information

85787-4-PBS targets DCC as part of a matched antibody pair:

MP02122-1: 85787-4-PBS capture and 85787-3-PBS detection (validated in Cytometric bead array)

MP02122-3: 85787-4-PBS capture and 85787-2-PBS detection (validated in Sandwich ELISA)

Unconjugated rabbit recombinant monoclonal antibody in PBS only (BSA and azide free) storage buffer at a concentration of 1 mg/mL, ready for conjugation. Created using Proteintech's proprietary in-house recombinant technology. Recombinant production enables unrivalled batch-to-batch consistency, easy scale-up, and future security of supply.

This conjugation ready format makes antibodies ideal for use in many applications including: ELISAs, multiplex assays requiring matched pairs, mass cytometry, and multiplex imaging applications. Antibody use should be optimized by the end user for each application and assay.

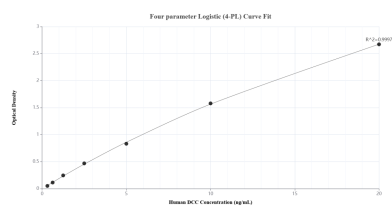
Storage

Storage:
Store at -80°C.
Storage Buffer:
PBS only, pH7.3

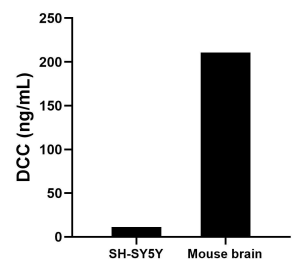
For technical support and original validation data for this product please contact:
T: 1 (888) 4PTGLAB (1-888-478-4522) (toll free in USA), or 1(312) 455-8498 (outside USA)
E: proteintech@ptglab.com
W: ptglab.com

This product is exclusively available under Proteintech Group brand and is not available to purchase from any other manufacturer.

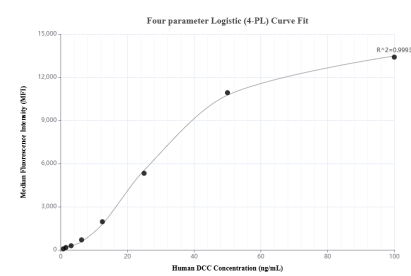
Selected Validation Data



Sandwich ELISA standard curve of MP02122-3, Human DCC Recombinant Matched Antibody Pair - PBS only. 85787-4-PBS was coated to a plate as the capture antibody and incubated with serial dilutions of standard Eg2937. 85787-2-PBS was HRP conjugated as the detection antibody. Range: 0.313-20 ng/mL



The mean DCC concentration was determined to be 11.21 ng/mL in SH-SY5Y cell extract based on a 1.00 mg/mL extract load and 210.63 ng/mL in mouse brain tissue extract based on a 6.60 mg/mL extract load.



Cytometric bead array standard curve of MP02122-1, DCC Recombinant Matched Antibody Pair, PBS Only. Capture antibody: 85787-4-PBS. Detection antibody: 85787-3-PBS. Standard: Eg2937. Range: 0.781-100 ng/mL