

For Research Use Only

DCC Recombinant antibody

Catalog Number: 85787-4-RR



Basic Information

Catalog Number: 85787-4-RR	GenBank Accession Number: NM_005215.3	Purification Method: Protein A purification
Size: 100ul , Concentration: 1000 µg/ml by Nanodrop;	GeneID (NCBI): 1630	CloneNo.: 250085A11
Source: Rabbit	UNIPROT ID: P43146	Recommended Dilutions: WB 1:5000-1:50000
Isotype: IgG	Full Name: deleted in colorectal carcinoma	
Immunogen Catalog Number: EG2937	Calculated MW: 158 kDa	
	Observed MW: 180 kDa	

Applications

Tested Applications: WB, ELISA	Positive Controls: WB : A-673 cells, U266 cells
Species Specificity: human	

Background Information

DCC, also named as IGDC1, belongs to the immunoglobulin superfamily and DCC family. DCC is a receptor for netrin required for axon guidance. DCC mediates axon attraction of neuronal growth cones in the developing nervous system upon ligand binding. Its association with UNC5 proteins may trigger signaling for axon repulsion. It also acts as a dependence receptor required for apoptosis induction when not associated with netrin ligand. DCC gene is a tumor suppressor gene. This antibody raised against a synthesized polypeptide of human DCC protein recognizes endogenous DCC with an apparent molecular weight of 180 kDa. As the predicted molecular mass of DCC is 158 kDa, the slower mobility is likely attributable to post-translational modification, perhaps by glycosylation at potential N-linked glycosylation sites (PMID: 7926722; 8044801).

Storage

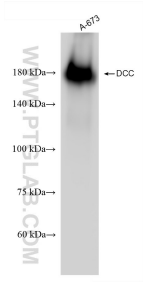
Storage:
Store at -20°C. Stable for one year after shipment.
Storage Buffer:
PBS with 0.02% sodium azide and 50% glycerol, pH7.3
Aliquoting is unnecessary for -20°C storage

*** 20ul sizes contain 0.1% BSA

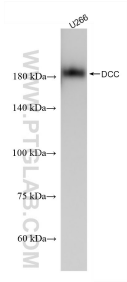
For technical support and original validation data for this product please contact:
T: 1 (888) 4PTGLAB (1-888-478-4522) (toll free in USA), or 1(312) 455-8498 (outside USA)
E: proteintech@ptglab.com
W: ptglab.com

This product is exclusively available under Proteintech Group brand and is not available to purchase from any other manufacturer.

Selected Validation Data



A-673 cells were subjected to SDS PAGE followed by western blot with 85787-4-RR (DCC antibody) at dilution of 1:20000 incubated at room temperature for 1.5 hours.



U266 cells were subjected to SDS PAGE followed by western blot with 85787-4-RR (DCC antibody) at dilution of 1:20000 incubated at room temperature for 1.5 hours.