

For Research Use Only

# CDC5L Recombinant antibody, PBS Only

Catalog Number: 85788-5-PBS



## Basic Information

<b>Catalog Number:</b> 85788-5-PBS	<b>GenBank Accession Number:</b> BC001568	<b>Purification Method:</b> Protein A purification
<b>Size:</b> 100ug, Concentration: 1 mg/ml by Nanodrop;	<b>GeneID (NCBI):</b> 988	<b>CloneNo.:</b> 250089G5
<b>Source:</b> Rabbit	<b>UNIPROT ID:</b> Q99459	
<b>Isotype:</b> IgG	<b>Full Name:</b> CDC5 cell division cycle 5-like (S. pombe)	
<b>Immunogen Catalog Number:</b> AG3578	<b>Calculated MW:</b> 802 aa, 92 kDa	
	<b>Observed MW:</b> 100 kDa	

## Applications

**Tested Applications:**  
WB, IF/ICC, Indirect ELISA

**Species Specificity:**  
human, mouse

## Background Information

CDC5L is ubiquitously expressed in humans, with relatively high expression levels in testis, bone marrow, and 25 other tissues. In proliferating cells, CDC5L is constitutively expressed, suggesting its regulation may occur through post-translational modifications. CDC5L plays a critical role in the cell cycle, particularly in the G2/M transition. It interacts with cyclins and cyclin-dependent kinases (CDKs), helping to control the timing and accuracy of cell division.

## Storage

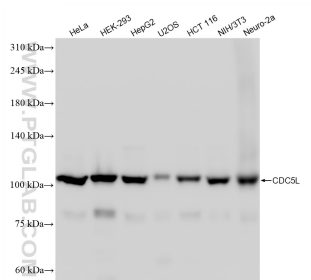
**Storage:**  
Store at -80°C.

**Storage Buffer:**  
PBS only, pH7.3

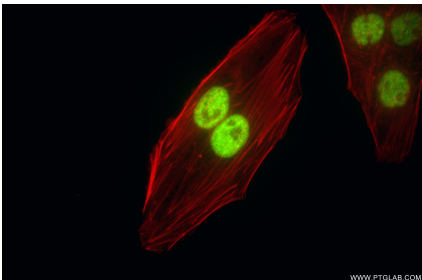
For technical support and original validation data for this product please contact:  
T: 1 (888) 4PTGLAB (1-888-478-4522) (toll free in USA), or 1(312) 455-8498 (outside USA)  
E: [proteintech@ptglab.com](mailto:proteintech@ptglab.com)  
W: [ptglab.com](http://ptglab.com)

This product is exclusively available under Proteintech Group brand and is not available to purchase from any other manufacturer.

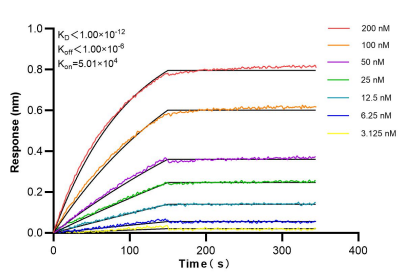
## Selected Validation Data



Various lysates were subjected to SDS PAGE followed by western blot with 85788-5-RR (CDC5L antibody) at dilution of 1:10000 incubated at room temperature for 1.5 hours. This data was developed using the same antibody clone with 85788-5-PBS in a different storage buffer formulation.



Immunofluorescent analysis of (4% PFA) fixed HepG2 cells using CDC5L antibody (85788-5-RR, Clone: 250089G5) at dilution of 1:1000 and CoraLite®488-Conjugated Goat Anti-Rabbit IgG(H+L) (SA00013-2), CL594-Phalloidin (red). This data was developed using the same antibody clone with 85788-5-PBS in a different storage buffer formulation.



Biolayer interferometry (BLI) kinetic assays of 85788-5-RR against Human CDC5L were performed. The affinity constant is below 1 pM.