

For Research Use Only

CDC5L Recombinant antibody

Catalog Number: 85788-5-RR



Basic Information

Catalog Number:

85788-5-RR

Size:

100ul, Concentration: 1000 µg/ml by Nanodrop;

Source:

Rabbit

Isotype:

IgG

Immunogen Catalog Number:

AG3578

GenBank Accession Number:

BC001568

GeneID (NCBI):

988

UNIPROT ID:

Q99459

Full Name:

CDC5 cell division cycle 5-like (S. pombe)

Calculated MW:

802 aa, 92 kDa

Observed MW:

100 kDa

Purification Method:

Protein A purification

CloneNo.:

250089G5

Recommended Dilutions:

WB 1:5000-1:50000

IF/ICC 1:500-1:2000

Applications

Tested Applications:

WB, IF/ICC, ELISA

Species Specificity:

human, mouse

Positive Controls:

WB : HeLa cells, HepG2 cells, U2OS cells, HCT 116 cells, NIH/3T3 cells, Neuro-2a cells

IF/ICC : HepG2 cells,

Background Information

CDC5L is ubiquitously expressed in humans, with relatively high expression levels in testis, bone marrow, and 25 other tissues. In proliferating cells, CDC5L is constitutively expressed, suggesting its regulation may occur through post-translational modifications. CDC5L plays a critical role in the cell cycle, particularly in the G2/M transition. It interacts with cyclins and cyclin-dependent kinases (CDKs), helping to control the timing and accuracy of cell division.

Storage

Storage:

Store at -20°C. Stable for one year after shipment.

Storage Buffer:

PBS with 0.02% sodium azide and 50% glycerol, pH7.3

Aliquoting is unnecessary for -20°C storage

*** 20ul sizes contain 0.1% BSA

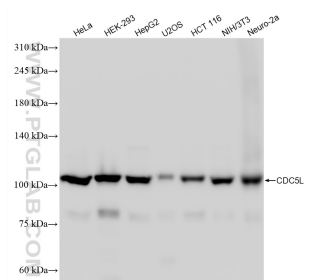
For technical support and original validation data for this product please contact:

T: 1 (888) 4PTGLAB (1-888-478-4522) (toll free in USA), or 1(312) 455-8498 (outside USA)

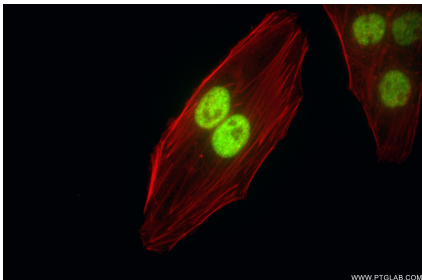
E: proteintech@ptglab.com
W: ptglab.com

This product is exclusively available under Proteintech Group brand and is not available to purchase from any other manufacturer.

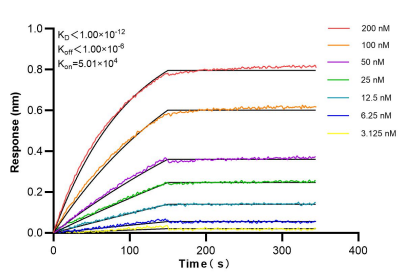
Selected Validation Data



Various lysates were subjected to SDS PAGE followed by western blot with 85788-5-RR (CDC5L antibody) at dilution of 1:10000 incubated at room temperature for 1.5 hours.



Immunofluorescent analysis of (4% PFA) fixed HepG2 cells using CDC5L antibody (85788-5-RR, Clone: 250089G5) at dilution of 1:1000 and CoraLite® 488-Conjugated Goat Anti-Rabbit IgG(H+L) (SA00013-2), CL594-Phalloidin (red).



Biolayer interferometry (BLI) kinetic assays of 85788-5-RR against Human CDC5L were performed. The affinity constant is below 1 pM.