

For Research Use Only

DDX18 Recombinant antibody, PBS Only (Capture)

Catalog Number: 85789-2-PBS



Basic Information

Catalog Number: 85789-2-PBS	GenBank Accession Number: BC001238	Purification Method: Protein A purification
Size: 100ug , Concentration: 1 mg/ml by Nanodrop;	GeneID (NCBI): 8886	CloneNo.: 250053A4
Source: Rabbit	UNIPROT ID: Q9NVP1	
Isotype: IgG	Full Name: DEAD (Asp-Glu-Ala-Asp) box polypeptide 18	
Immunogen Catalog Number: AG27457	Calculated MW: 75 kDa	
	Observed MW: 80 kDa	

Applications

Tested Applications:
WB, IF/ICC, Cytometric bead array, Sandwich ELISA, Indirect ELISA, Sample test

Species Specificity:
human

Product Information

85789-2-PBS targets DDX18 as part of a matched antibody pair:

MP02107-1: 85789-2-PBS capture and 85789-1-PBS detection (validated in Cytometric bead array)

MP02107-2: 85789-2-PBS capture and 85789-4-PBS detection (validated in Sandwich ELISA)

Unconjugated rabbit recombinant monoclonal antibody in PBS only (BSA and azide free) storage buffer at a concentration of 1 mg/mL, ready for conjugation. Created using Proteintech's proprietary in-house recombinant technology. Recombinant production enables unrivalled batch-to-batch consistency, easy scale-up, and future security of supply.

This conjugation ready format makes antibodies ideal for use in many applications including: ELISAs, multiplex assays requiring matched pairs, mass cytometry, and multiplex imaging applications. Antibody use should be optimized by the end user for each application and assay.

Background Information

DDX18 (DEAD-box helicase 18) is a protein belonging to the DEAD-box deconjugating enzyme family that is widely involved in RNA metabolism. It plays a key role in the assembly of the ribosomal small subunit (SSU) and ensures efficient intracellular protein synthesis. DDX18 unwinds RNA double strands through its deconjugating enzyme activity, which is essential for the proper processing and functional execution of RNA molecules. In addition, DDX18 is a multifunctional RNA deconjugating enzyme involved in a variety of signaling pathways, playing a key role not only in ribosome assembly and RNA metabolism, but also in the regulation of a variety of biological processes such as cell cycle, genome stability and stem cell pluripotency.

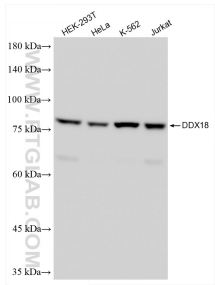
Storage

Storage:
Store at -80°C.
Storage Buffer:
PBS only, pH7.3

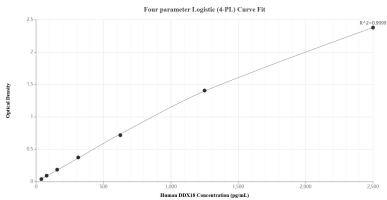
For technical support and original validation data for this product please contact:
T: 1 (888) 4PTGLAB (1-888-478-4522) (toll free in USA), or 1(312) 455-8498 (outside USA)
E: proteintech@ptglab.com
W: ptglab.com

This product is exclusively available under Proteintech Group brand and is not available to purchase from any other manufacturer.

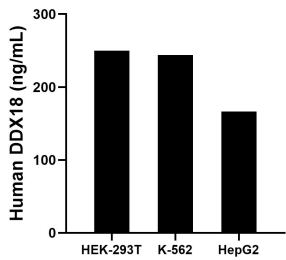
Selected Validation Data



Various lysates were subjected to SDS PAGE followed by western blot with 85789-2-RR (DDX18 antibody) at dilution of 1:10000 incubated at room temperature for 1.5 hours. This data was developed using the same antibody clone with 85789-2-PBS in a different storage buffer formulation.



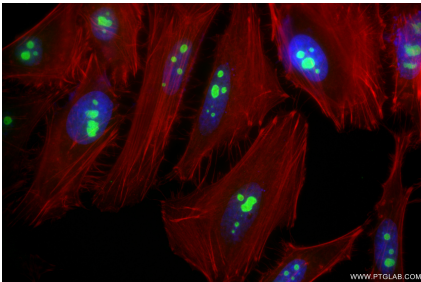
Sandwich ELISA standard curve of MP02107-2, Human DDX18 Recombinant Matched Antibody Pair - PBS only. 85789-2-PBS was coated to a plate as the capture antibody and incubated with serial dilutions of standard Ag27457. 85789-4-PBS was HRP conjugated as the detection antibody. Range: 39.1-2500 pg/mL



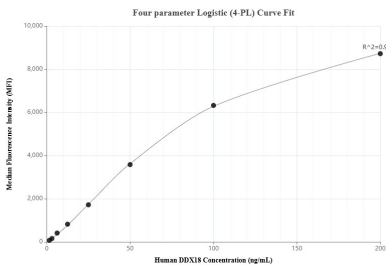
The mean DDX18 concentration was determined to be 249.8 ng/mL in HEK-293T cell extract based on a 2.8 mg/mL extract load, 244.1 ng/mL in K-562 cell extract based on a 2.5 mg/mL extract load and 166.4 ng/mL in HepG2 cell extract based on a 1.8 mg/mL extract load.



Immunofluorescent analysis of (4% PFA) fixed HepG2 cells using DDX18 antibody (85789-2-RR, Clone: 250053A4) at dilution of 1:2500 and CoraLite®488-Conjugated Goat Anti-Rabbit IgG(H+L) (SA00013-2), CL594-Phalloidin (red). This data was developed using the same antibody clone with 85789-2-PBS in a different storage buffer formulation.



Immunofluorescent analysis of (4% PFA) fixed HeLa cells using DDX18 antibody (85789-2-RR, Clone: 250053A4) at dilution of 1:2500 and CoraLite®488-Conjugated Goat Anti-Rabbit IgG(H+L) (SA00013-2), CL594-Phalloidin (red). This data was developed using the same antibody clone with 85789-2-PBS in a different storage buffer formulation.



Cytometric bead array standard curve of MP02107-1, DDX18 Recombinant Matched Antibody Pair, PBS Only. Capture antibody: 85789-2-PBS. Detection antibody: 85789-1-PBS. Standard: Ag27457. Range: 1.563-200 ng/mL