

For Research Use Only

# Ezrin Recombinant antibody, PBS Only (Detector)

Catalog Number: 85790-2-PBS



## Basic Information

|   |  |   |
|---|--|---|
| <b>Catalog Number:</b><br>85790-2-PBS                       | <b>GenBank Accession Number:</b><br>BC013903 | <b>Purification Method:</b><br>Protein A purification |
| <b>Size:</b><br>100ug , Concentration: 1 mg/ml by Nanodrop; | <b>GeneID (NCBI):</b><br>7430                | <b>CloneNo.:</b><br>250065B7                          |
| <b>Source:</b><br>Rabbit                                    | <b>ENSEMBL Gene ID:</b><br>ENSG00000092820   |   |
| <b>Isotype:</b><br>IgG                                      | <b>UNIPROT ID:</b><br>P15311                 |   |
| <b>Immunogen Catalog Number:</b><br>AG23530                 | <b>Full Name:</b><br>ezrin                   |   |
|   | <b>Calculated MW:</b><br>69 kDa              |   |

## Applications

**Tested Applications:**  
Cytometric bead array, Sandwich ELISA, Indirect ELISA, Sample test

**Species Specificity:**  
human

## Product Information

85790-2-PBS targets Ezrin as part of a matched antibody pair.

MP02097-1: 85790-1-PBS capture and 85790-2-PBS detection (validated in Cytometric bead array)

MP02097-2: 85790-3-PBS capture and 85790-2-PBS detection (validated in Cytometric bead array, Sandwich ELISA)

Unconjugated rabbit recombinant monoclonal antibody in PBS only (BSA and azide free) storage buffer at a concentration of 1 mg/mL, ready for conjugation. Created using Proteintech's proprietary in-house recombinant technology. Recombinant production enables unrivalled batch-to-batch consistency, easy scale-up, and future security of supply.

This conjugation ready format makes antibodies ideal for use in many applications including: ELISAs, multiplex assays requiring matched pairs, mass cytometry, and multiplex imaging applications. Antibody use should be optimized by the end user for each application and assay.

## Storage

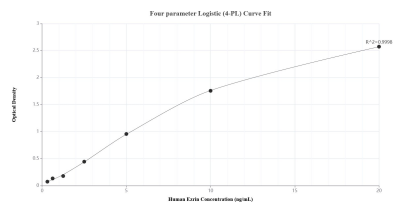
**Storage:**  
Store at -80°C.

**Storage Buffer:**  
PBS only, pH7.3

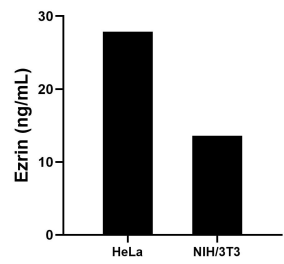
For technical support and original validation data for this product please contact:  
T: 1 (888) 4PTGLAB (1-888-478-4522) (toll free in USA), or 1(312) 455-8498 (outside USA)  
E: [proteintech@ptglab.com](mailto:proteintech@ptglab.com)  
W: [ptglab.com](http://ptglab.com)

This product is exclusively available under Proteintech Group brand and is not available to purchase from any other manufacturer.

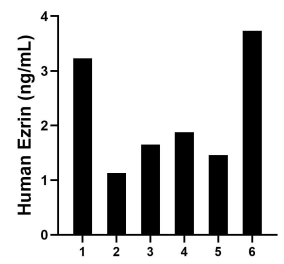
Selected Validation Data



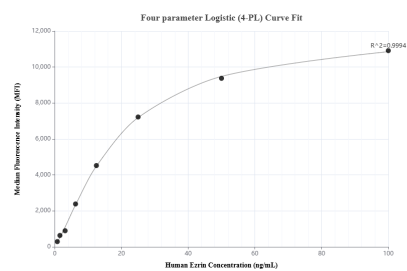
Sandwich ELISA standard curve of MP02097-2, Human Ezrin Recombinant Matched Antibody Pair - PBS only. 85790-3-PBS was coated to a plate as the capture antibody and incubated with serial dilutions of standard Ag23530. 85790-2-PBS was HRP conjugated as the detection antibody. Range: 0.313-20 ng/mL.



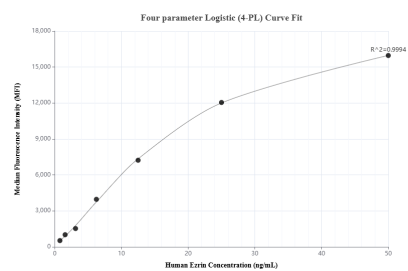
The mean Ezrin concentration was determined to be 27.86 ng/mL in HeLa cell extract based on a 1.50 mg/mL extract load and 13.61 ng/mL in NIH/3T3 cell extract based on a 1.50 mg/mL extract load.



Serum of six individual healthy human donors was measured. The Ezrin concentration of detected samples was determined to be 2.18 ng/mL with a range of 1.13-3.73 ng/mL.



Cytometric bead array standard curve of MP02097-2, Ezrin Recombinant Matched Antibody Pair, PBS Only. Capture antibody: 85790-3-PBS. Detection antibody: 85790-2-PBS. Standard: Ag23530. Range: 0.781-100 ng/mL.



Cytometric bead array standard curve of MP02097-1, Ezrin Recombinant Matched Antibody Pair, PBS Only. Capture antibody: 85790-1-PBS. Detection antibody: 85790-2-PBS. Standard: Ag23530. Range: 0.781-50 ng/mL.